

*An Online PDH Course  
brought to you by  
CEDengineering.com*

## **Chemical Transformation Simulator**

Course No: H02-013

Credit: 2 PDH

---

Gilbert Gedeon, P.E.

---



Continuing Education and Development, Inc.

P: (877) 322-5800  
[info@cedengineering.com](mailto:info@cedengineering.com)

[www.cedengineering.com](http://www.cedengineering.com)

*This course was adapted from the “US Environmental Protection Agency”, “User’s Guide for the Chemical Transformation Simulator (CTS), Version 2.0”, which is in the public domain.*

## NOTICE

This document has been reviewed by the U.S. Environmental Protection Agency, Office of Research and Development, and approved for publication. It does not represent and should not be construed to represent any Agency determination or policy. Mention of trade names or commercial products does not constitute endorsement or recommendation for use.

## Purpose

The Chemical Transformation Simulator (CTS) User's Guide is designed to provide the first-time user a complete understanding of how to utilize the CTS tool. The User's Guide may be reviewed from start to finish or by moving directly to a topic of interest through selection of the appropriate topic in the Table of Contents.

## Table of Contents

NOTICE .....	i
Purpose .....	i
1.Introduction .....	1
2.Background .....	1
3.Using the CTS Software.....	2
3.1. Restrictions.....	2
3.2. Accessing the CTS.....	3
4.CTS Modules Overview .....	4
4.1. Chemical Editor (CE):.....	4
4.3. Physicochemical Properties (PCP) Module: .....	4
4.4. Reaction Pathway Simulator (RPS):.....	5
5.Execution of the CTS .....	9
5.1. Single Chemical Entry .....	9
5.2. Batch Chemical Entry .....	10
6.Execution of the CTS Workflows.....	11
6.1. Calculate Chemical Speciation Workflow.....	11
6.2. Calculate Ionization Constants .....	16
6.3. Calculate Dominant Tautomer Distribution .....	18
6.4. Calculate Stereoisomers.....	21
6.5. Calculate Physicochemical Properties Workflow .....	25
6.6. Generate Transformation Products Workflow.....	32
6.6.1 Reaction Library Selection.....	35

6.6.2 Output from the Generate Transformation Products Workflow .....	43
6.7. Generation of PDF, HTML and CSV Reports .....	51
7.References .....	53

## 1. Introduction

The Chemical Transformation Simulator (CTS) provides the calculated physicochemical properties of a target chemical and its transformation products, which are predicted as a function of the reaction system of interest. This is accomplished through the integration of cheminformatics applications for the encoding of process science underlying transformation pathways and computational chemistry tools for the calculation of physicochemical properties.

The CTS consists of three modules, the selection and order of execution of which is based on the user's choice of one of three available workflows as described below.

- **Chemical Editor (CE) Module:** Provides options for chemical entry through SMILES notation, chemical name, CAS #, or drawn structure, as well as speciation of the parent chemical
- **Physicochemical Properties (PCP) Module:** Calculates physicochemical properties for the parent chemical and predicted transformation products based on the executions of multiple physicochemical calculators
- **Reaction Pathway Simulator (RPS) Module:** Generates potential transformation products based on user-specified reaction conditions

## 2. Background

A key Agency need identified as a high priority in the Chemical Safety for Sustainability (CSS) National Research Program is for high throughput computational systems to rank chemicals based on hazards and risks. To fully characterize the risks associated with the release of a chemical into the environment, tools are necessary to simulate environmental fate and transport for organic chemicals for which such data are not available. Knowledge of inherent chemical properties (ICP) is essential for the parameterization of environmental fate and transport models. Of the ~85,000 chemicals in the TSCA inventory, it is estimated that high quality measured ICP data are available for less than 2% of these chemicals. Additionally, 20 to 30 new chemicals a month are being assessed through the Office of Pollution Prevention and Toxics (OPPT) Pre-Manufacturing Notification (PMN) process. This ever-growing data gap must be addressed through the development of a high throughput computational system for calculating the ICP necessary for the parameterization of environmental fate models used to estimate environmental

concentrations of both the parent chemical and predicted transformation products as a function of environmental conditions.

The key components of the CTS are the Physicochemical Properties module (PCP) and the Reaction Pathway Simulator module (RPS). The PCP is based on a consensus approach that allows the user to compare output generated by several calculators that take different approaches to calculating specific physicochemical properties. These calculators include (1) EPI Suite™, which uses a fragment-based approach, (2) T.E.S.T. (Toxicity Estimation Software Tool), which uses Quantitative Structure Activity Relationship (QSAR)-based approaches, (3) ChemAxon plug-in calculators, which use an atom-based fragment approach, and (4) OPERA (OPEn structure-activity/property Relationship App), which uses a weighted k-nearest neighbor approach to construct QSAR and Quantitative Structure Property Relationship (QSPR) models. The output derived from these calculators will enable the user to compare the calculated data with measured data in readily accessible web-based databases.

The output of the RPS is based on the selection and execution of reaction libraries that represent one-step reactions for transformation (e.g., abiotic reduction and hydrolysis) of reactive functional groups. These one-step reactions represent viable transformation pathways based on the identification and subsequent transformation of reactive functional groups. A reaction library for human phase I metabolism developed by ChemAxon is also available through the CTS. The development of reaction libraries allows us to “encode” the known process science published (current and future) in the peer-reviewed literature. The encoding of process science is accomplished using Chemical Terms Language and Smart Reaction strings through cheminformatics applications. The execution of these reaction libraries provides dominant transformation pathways and products for the chemical of interest as a function of environmental conditions.

### 3. Using the CTS Software

#### 3.1. Restrictions

The CTS is designed to predict transformation pathways and calculate physicochemical properties for organic chemicals. The CTS is designed for users with expertise regarding the environmental processes controlling the degradation of organic chemicals and the use of physicochemical properties in environmental fate modeling. Currently, organometallics, non-dissociating salts of organic chemicals, and polymers are not recognized by the CTS. To provide CTS users with a rich user experience we take advantage of features specified in the HTML 5 standards. Internet Explorer does not fully implement support for HTML 5 standards. As a result, CTS functionality will be limited when using the Internet Explorer web browser. We recommend using the latest version of Google Chrome, Microsoft Edge, or Mozilla Firefox.

## 3.2. Accessing the CTS

CTS available to the public at <https://qed.epa.gov/cts/>. From the home page, the user can select one of three available CTS workflows, or access general information concerning the major modules of the CTS, the physicochemical calculators, and the reaction libraries, as shown in the screen shot below.

### CTS: Chemical Transformation Simulator

#### About

- CTS Home
- CTS Basic Information

#### Execute CTS Workflows

- Calculate Chemical Speciation
- Calculate Physicochemical Properties
- Generate Transformation Products

#### Documentation

- CTS User's Guide
- CTS Modules
- Property Calculators
- Reaction Libraries
- API Documentation
- Manuscripts
- Version History
- Help



#### What is CTS?

The Chemical Transformation Simulator (CTS) is a web-based tool for predicting environmental and biological transformation pathways and physicochemical properties of organic chemicals.

#### Key Links

- Chemical Research
- Chemicals and Toxins
- CompTox Chemicals Dashboard
- EPA Research

#### CTS Workflows

Three workflows have been implemented in CTS to help users predict how organic chemicals are partitioned, transformed and metabolized in environmental and biological systems. More information about the individual workflows and modules is available under the tabs in the navigation panel.

**Calculate Chemical Speciation Workflow:** Calculates the speciation (i.e., ionization as a function of pH, tautomer distribution, and possible stereoisomers) of the entered chemical.

**Calculate Physicochemical Properties Workflow:** Calculates physicochemical properties for the entered chemical using four stand-alone calculators: EPI Suite, ChemAxon, TEST, and OPERA.

**Generate Transformation Products Workflow:** Generates transformation products of the entered chemical based on user-specified conditions and reaction libraries. Once transformation products are generated, physicochemical properties for one or more parent or product chemicals can be calculated within the workflow.

*CTS functionality will be limited when using the Internet Explorer web browser. We recommend using the latest version of Google Chrome, Microsoft Edge, or Mozilla Firefox.*

- Chemical Speciation Workflow
- Physicochemical Properties Workflow
- Transformation Products Workflow

## 4. CTS Modules Overview

### 4.1. Chemical Editor (CE):

CTS's Chemical Editor (CE) appears at the beginning of all workflows and allows users to enter chemicals by their name, Chemical Abstracts Service Registry Number (CAS#), or Simplified Molecular-Input Line-Entry System (SMILES) string. Alternatively, the Ketcher open-source chemical structure editor is implemented in CTS to allow users to draw a chemical structure (EPAM Life Sciences; <https://lifescience.opensource.epam.com/ketcher/>). ChemAxon's JChem application is used to generate a standardized SMILES string, and EPA's CompTox Chemistry Dashboard (<https://comptox.epa.gov/dashboard>) is used to obtain the preferred common name, IUPAC name, chemical formula, relevant CAS numbers, average and monoisotopic masses, and the DTXSID (unique substance identifier assigned by EPA's Center for Computational Toxicology and Exposure (CCTE)) for the selected chemical.

### 4.2. Chemical Speciation:

CTS's Chemical Speciation (CS) workflow uses ChemAxon's Plugin Calculators to generate:

- The speciation of a chemical as a function of pH
- The ionization constant(s)
- The dominant tautomer distribution; and
- Structures for all possible isomers

### 4.3. Physicochemical Properties (PCP) Module:

CTS's Physicochemical Properties Module calculates physicochemical properties for the parent chemical and predicted transformation products based on the findings of multiple physicochemical calculators. The PCP is based on a consensus approach that allows users to compare output from multiple calculators that use different approaches to calculate specific physicochemical properties. Additionally, the geometric mean of the predicted values (not including any measured data or ionization constants) for each selected property from the selected calculators will be automatically calculated and displayed in the table when predicted values are requested.

The calculators that PPC is currently accessing include:

1. EPI Suite™, which uses a QSAR approach with either fragment counts or properties as descriptors;
2. Toxicity Estimation Software Tool (T.E.S.T.), which implements several approaches, including fragment-based QSARs, hierarchical clustering with structural similarity based on a variety of 2-D physicochemical descriptors, and nearest neighbor;

3. ChemAxon plug-in calculators, which are based on QSARs with either atom or fragment counts as descriptors; and
4. OPEn structure activity/property Relationship App (OPERA), which uses a weighted k-nearest neighbor approach to construct QSAR/QSPR models based on 2-D physicochemical descriptors.

Users also have the option to request measured data that is available in the EPI Suite™ PHYSPROP physicochemical property database.

#### 4.4. Reaction Pathway Simulator (RPS):

CTS's Reaction Pathway Simulator (RPS) generates potential transformation products based on user-specified reaction conditions. The output of the RPS is based on the selection and execution of reaction libraries that represent reaction schemes for the transformation of reactive functional groups that are susceptible to processes such as reduction and hydrolysis. These reaction schemes denote viable transformation pathways based on the identification and transformation of the reactive functional groups. A rank is assigned to each one of the reaction schemes based on available experimental data. The rank is essentially a relative reaction rate, defined on a scale of one to seven, with seven being assigned to the fastest reaction schemes. The rank of each scheme is used to calculate an approximate percentage production of each potential transformation product.

In Metabolizer, an algorithm has been implemented to approximate a percent production and accumulation for products of each reaction scheme. In the Metabolizer algorithm, the unitless “formation” value for scheme  $i$  ( $f_i$ ) is defined as the number 7 raised to the power of the rank:

$$f_i \stackrel{\text{def}}{=} 7^{\text{Rank}_i}$$

The “formation” values are analogous to rate constants, and the “production” (in %) of the product(s) generated by scheme  $i$  is calculated according to the following equation:

$$\% P_i = \frac{100 f_i}{\sum_{j=1}^N f_j}$$

where  $N$  is the total number of transformation schemes in the current generation. The “accumulation” of the product formed by scheme  $i$  is then calculated as the difference between  $f_i$  and the summation of the formation values for all  $M$  schemes that may transform the product in the next generation, normalized by the summation of the formation values for all transformation schemes in the current generation:



$$\% A_i = \frac{100(f_i - \sum_{l=1}^M f_l)}{\sum_{j=1}^N f_j}$$

A more detailed description of the production and accumulation calculations is provided in the online documentation for the CTS Reaction Libraries.

Developing reaction libraries allows scientists to "encode" the known process science published – current and future – in the peer-reviewed literature. Encoding process science is accomplished by using Chemical Terms Language and cheminformatics applications. Reaction libraries have been developed for the environmental transformation processes of abiotic hydrolysis and abiotic reduction and direct photolysis (unranked and ranked). A Spontaneous reaction library, which is intended to be combined with other CTS reaction libraries, is also available to capture the rapid transformation of intermediates that form due to other transformation processes (e.g., hydrolysis or photolysis). A reaction library is currently under development to predict the microbial transformation products of organic chemicals in anaerobic environments.

Two additional libraries have been developed to predict the likely environmental and metabolic transformation products of per- and polyfluoroalkyl substances (PFAS). These libraries are designed to run as standalone libraries and cannot be combined with other CTS reaction libraries.

In addition to the libraries developed for CTS, the RPS links to several externally developed transformation prediction tools. A reaction library for human phase I metabolism that was developed by ChemAxon is made available through the RPS. CTS provides likely aerobic biotransformation products from the EnviPath prediction system for the microbial biotransformation of organic environmental contaminants through web services. Finally, CTS accesses predictions from four independent BioTransformer modules: the Phase I (CYP450) transformer for predicting metabolism in mammals, the Phase II (CYP450) transformer for predicting conjugation reactions in mammals, the Gut Microbial Transformer for predicting gut microbial metabolism, and the EC-based Transformer for predicting promiscuous metabolism.

Executing these reaction libraries provides dominant transformation pathways and products for the chemical of interest as a function of environmental conditions. Users also have the option to execute the PCP for the calculation of physicochemical properties for the parent chemical and transformation products.

Documentation on the process science supporting the development of the CTS reaction libraries is available on the Reaction Libraries page by clicking on the appropriate link in the left-hand frame. For example, the documentation for the "Abiotic Hydrolysis Reaction Library" lists the 24 reaction schemes in the library, as shown in the screen shot below.

## Abiotic Hydrolysis Reaction Library

The Abiotic Hydrolysis Reaction Library has been developed as a component of the Chemical Transformation Simulator (CTS), a web-based software tool under development in EPA's Office of Research and Development. The library is implemented in CTS to predict the likely hydrolytic transformation products in the environment for an organic chemical of interest.

Version 1.8 of the Abiotic Hydrolysis Reaction Library contains 24 reaction schemes:

- [Halogenated Aliphatics: Nucleophilic Substitution](#)
  - [Scheme A: C-X with no other adjacent halogens](#)
  - [Scheme B: C-X with vicinal halogen atoms](#)
  - [Scheme C: C-X with geminal halogen atoms](#)
- [Halogenated Aliphatics: Elimination](#)
- [Epoxide Hydrolysis](#)
- [Organophosphorus Ester Hydrolysis 1 \(Base-Catalyzed\)](#)
- [Organophosphorus Ester Hydrolysis 2 \(Neutral or Acid-Catalyzed\)](#)
- [Carboxylic Acid Ester Hydrolysis](#)
- [Lactone Hydrolysis](#)
- [Carbonate Hydrolysis](#)
- [Cyclic Carbonate Hydrolysis](#)
- [Anhydride Hydrolysis](#)
- [Cyclic Anhydride Hydrolysis](#)
- [Amide Hydrolysis](#)
- [Lactam Hydrolysis](#)
- [Carbamate Hydrolysis](#)
- [Thiocarbamate Hydrolysis](#)
- [Urea Hydrolysis](#)
- [Cyclic Urea Hydrolysis](#)
- [Sulfonylurea Hydrolysis](#)
- [Nitrile Hydrolysis](#)
- [N-S Cleavage](#)
- [Imide Hydrolysis](#)
- [Acid Halide Hydrolysis](#)

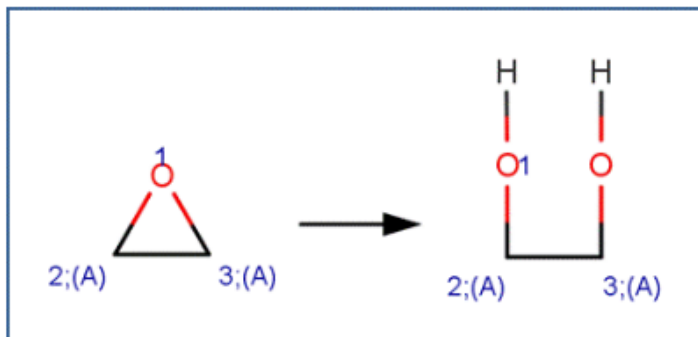
[Ranking of Hydrolysis Reaction Schemes](#)

[Version History](#)

Selection of one of the transformation pathways provides the reaction scheme, and documented examples with references. The following illustrates this information for Epoxide Hydrolysis:

### Epoxide Hydrolysis

SCHEME:



EXAMPLES:

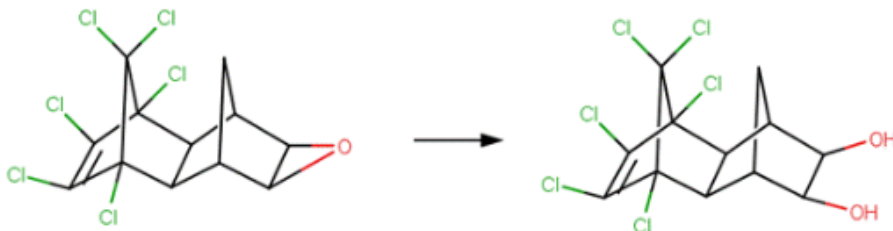
- 1,2-Epoxycyclohexane (McMurry, 2011)



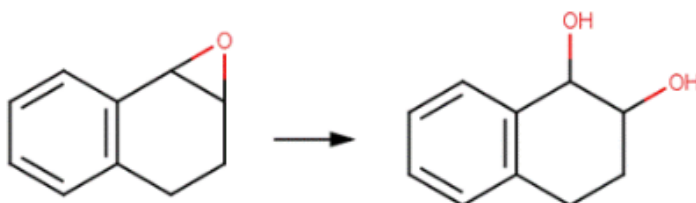
- Epichlorohydrin (Gaca *et al*, 2011)



- Endrin (Larson and Weber, 1994; U.S. EPA, 1992)



- 1,2-Epoxy-1,2,3,4-tetrahydronaphthalene (Becker *et al*, 1979)



## 5. Execution of the CTS

The CTS is executed by selecting one of three available workflows (see descriptions below) and then entering a single chemical or a batch input file. The process for entering a single chemical or a batch input file, as described below, is identical for each of the workflows.

### 5.1. Single Chemical Entry

For single chemical entry, the “Run single chemical” tab is selected below the workflow of interest in the left-hand frame. The Chemical Editor appears where there is the option to either enter a SMILES String, name, or Chemistry Abstracts Service (CAS) # in the Lookup Chemical box, or to draw a chemical structure using the Chemical Editor (see screen shot below). For either case, the appropriate box must be clicked after providing the required information.

[Contact Us](#)

### CTS: Chemical Transformation Simulator 1.3.1

**About**

---

[CTS Home](#)

---

[CTS Basic Information](#)

---

**Execute CTS Workflows**

---

[Calculate Chemical Speciation](#)

[Run single chemical](#)

---

[Calculate Physicochemical Properties](#)

---

[Generate Transformation Products](#)

---

**Documentation**

---

[CTS User's Guide](#)

---

[CTS Modules](#)

---

[Property Calculators](#)

---

[Reaction Libraries](#)

---

[API Documentation](#)

---

[Manuscripts](#)

---

[Version History](#)

---

[Help](#)

---

### Calculate Chemical Speciation

[Chemical Editor](#) | [Chemical Speciation](#)

*Enter a SMILES, Name, or CAS#, or draw a chemical, then click the button located in the top right of the chosen method to get results. Click the "next" button below or click the "Chemical Speciation" link above to continue through the workflow.*

**Lookup Chemical** Enter a SMILES, Name, or CAS# and Click Here

**Draw Chemical Structure** Draw a chemical structure and Click Here

📁 📄 📄 🔄 ✂️ 📄 📄 100%

🔍 👤 ⊕ ⊖ ⚙️ 🔍 🔍 🔄

👉 👈 👉 👈 👉 👈 👉 👈

H  
C  
N  
O  
S  
P  
F  
Cl  
Br  
I

## 5.2. Batch Chemical Entry

For batch chemical entry, the “Run batch file” tab is selected below the workflow of interest in the left-side frame. By clicking on the sample batch input link, the example batch file, shown below in the screen shot, is opened or downloaded. The chemicals are entered as a single column of SMILES strings. The default value is currently set to a maximum of 10 chemicals.

Sample batch input:

```
C1=CC=CC=C1
CC(=O)OC1=CC=CC=C1C(O)=O
OC1=CC=CC=C1
OC(=O)CC(O)(CC(O)=O)C(O)=O
[O-][N+](=O)C1=CC=C(C=C1)[N+](=O)[O-]=O
```

### CTS: Chemical Transformation Simulator

**About**

[CTS Home](#)

---

[About CTS](#)

**Execute CTS Workflows**

[Calculate Chemical Speciation](#)

---

[Run single chemical](#)

[Run batch file](#)

---

[Calculate Physicochemical Properties](#)

---

[Generate Transformation Products](#)

**Documentation**

---

[Download CTS User's Guide \(PDF\)](#)

---

[CTS Modules](#)

---

[Physicochemical Calculators](#)

---

[Reaction Libraries](#)

---

[API Documentation](#)

---

[Manuscripts](#)

---

[Version History](#)

---

[Help](#)

## Calculate Chemical Speciation Batch Run

- [Upload a text file of SMILES strings organized into a single column \(View/download sample batch input file\):](#)
- File to upload:  No file chosen

## 6. Execution of the CTS Workflows

The user executes the CTS through the selection of one of three available workflows:

- Calculate Chemical Speciation
- Calculate Physicochemical Properties
- Generate Transformation Products

### 6.1. Calculate Chemical Speciation Workflow

Selection of the Calculate Chemical Speciation Workflow provides this page illustrating the workflow overview as illustrated below. ChemAxon calculator plugins are executed for the calculation of chemical speciation.

## CTS: Chemical Transformation Simulator

### About

- CTS Home
- About CTS

### Execute CTS Workflows

- Calculate Chemical Speciation**
- Run single chemical
- Run batch file
- Calculate Physicochemical Properties
- Generate Transformation Products

### Documentation

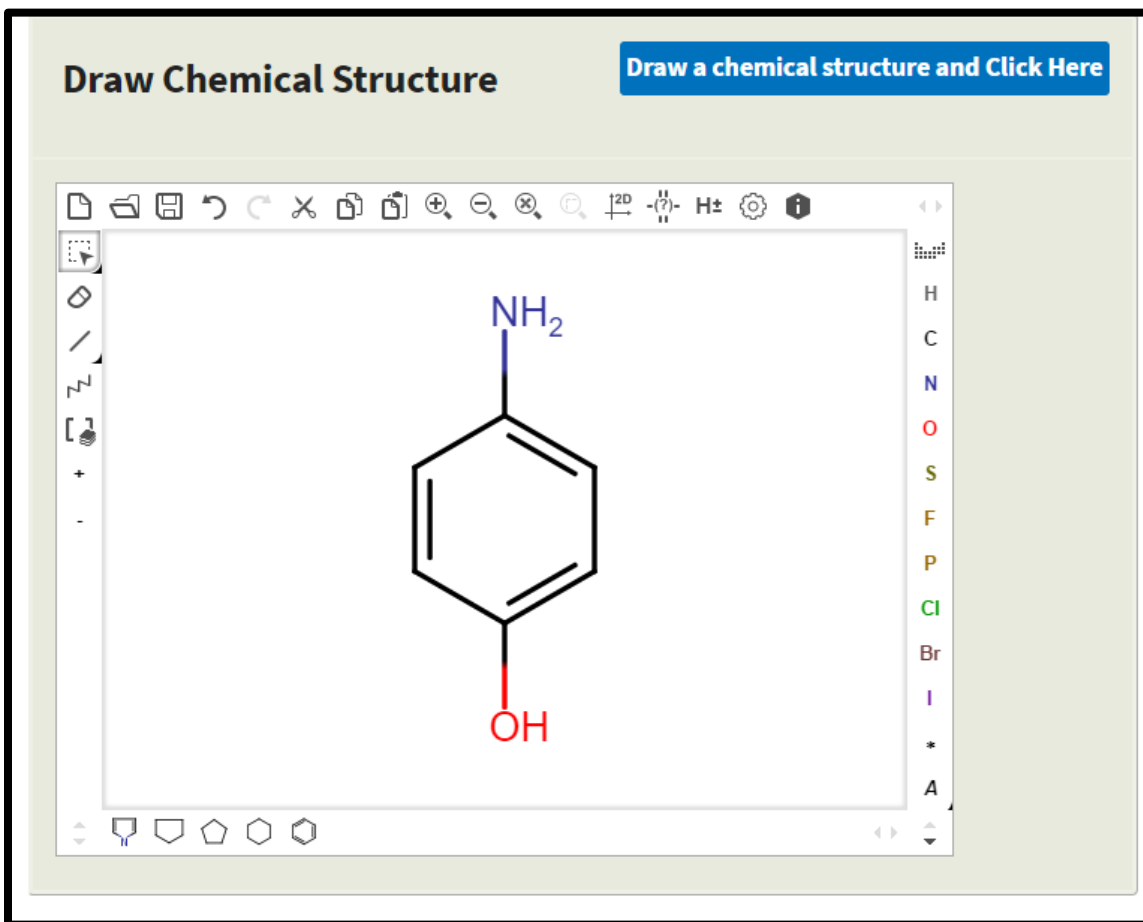
- Download CTS User's Guide (PDF)
- CTS Modules
- Physicochemical Calculators
- Reaction Libraries
- API Documentation
- Manuscripts
- Version History
- Help

# Calculate Chemical Speciation Overview

This workflow allows you to enter an individual chemical through the Chemical Editor (see below). Based on the selection of the available options for structure analysis, you will be able to generate structure information including ionization constants (pKa values), the dominant forms of ionized species and tautomers, as well as structures for possible stereoisomers.

```
graph LR; CE[Chemical Editor] --> P[Protonation: - pKa calculation - Microspecies distribution]; CE --> TD[Tautomer Distribution]; CE --> SG[Stereoisomer Generation];
```

Clicking on the “Run single chemical” link takes the user to the Chemical Editor. For the following example, 4-aminophenol was entered into the Chemical Editor as shown in the screen shot below.



After clicking the Next button at the bottom of the Chemical Editor or the Chemical Speciation link at the top of the workflow frame, select from three available options for calculating chemical speciation as shown in the screen shot below.

## Calculate Chemical Speciation

Chemical Editor | Chemical Speciation

*Check one or more calculation methods to run, then hit submit below*

<input type="checkbox"/> Calculate Ionization Constants (pKa) Parameters	
Number of decimals for pKa:	<input type="text" value="2"/>
pH Lower Limit:	<input type="text" value="0"/>
pH Upper Limit:	<input type="text" value="14"/>
pH Step Size:	<input type="text" value="0.2"/>
Generate Major Microspecies at pH:	<input type="text" value="7.0"/>
Isoelectric Point (pI) pH Step Size for Charge Distribution:	<input type="text" value="0.5"/>

<input type="checkbox"/> Calculate Dominant Tautomer Distribution	
Maximum Number of Structures:	<input type="text" value="100"/>
at pH:	<input type="text" value="7.0"/>

<input type="checkbox"/> Calculate Stereoisomers	
Maximum Number of Structures:	<input type="text" value="100"/>



Select any combination of the calculators; use the provided default values or change the default values required by the user. The following parameters can be adjusted:

- **Calculate Ionization Constants**

- Number of decimals: Number of decimal places calculated for acidic and basic  $pK_a$  values
- pH Lower limit: Specifies the lower end of the pH range for which the microspecies will be generated
- pH Upper limit: Specifies the upper end of the pH range for which the microspecies will be generated
- Generate Major Microspecies at pH: Generates the Major Microspecies at the specified pH.
- pH step size: Specifies the pH step size for the X-Axis of the plot illustrating the distribution of the microspecies as a function of pH
- Isoelectric Point (pI) pH Step Size for Charge Distribution: Specifies the pH step size for the X-Axis of the plot illustrating the Isoelectric Point and charge distribution as a function of pH

- **Calculate Dominant Tautomer Distribution**

- Maximum Number of Structures: Specifies the maximum number of structures that will be generated.
- At pH: Specifies the pH at which the dominant tautomer distribution will be calculated

- **Calculate Stereoisomers**

- Maximum Number of Structures: Specifies the maximum number of structures that will be generated.

The user also has the option of running a batch file. By clicking on the “Run batch file link”, the following screen appears. The user has the option to view or download a sample batch input file or enter a file by clicking on the Choose File button.

## CTS: Chemical Transformation Simulator

### About

[CTS Home](#)

[About CTS](#)

### Execute CTS Workflows

[Calculate Chemical Speciation](#)

[Run single chemical](#)

[Run batch file](#)

[Calculate Physicochemical Properties](#)

[Generate Transformation Products](#)

### Documentation

[Download CTS User's Guide \(PDF\)](#)

[CTS Modules](#)

[Physicochemical Calculators](#)

[Reaction Libraries](#)

[API Documentation](#)

[Manuscripts](#)

[Version History](#)

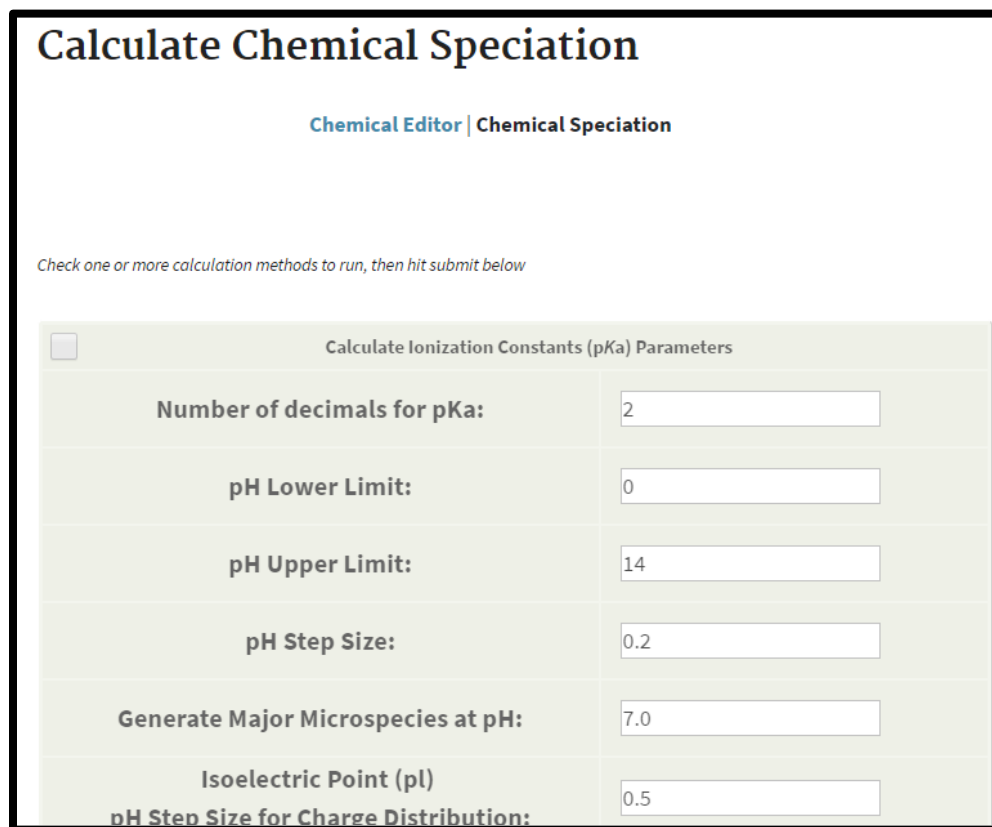
[Help](#)

## Calculate Chemical Speciation Batch Run

- Upload a text file of SMILES strings organized into a single column (View/download sample batch input file):
- File to upload:  No file chosen

## 6.2. Calculate Ionization Constants

Once the calculator(s) has been chosen and the appropriate parameters entered, click the Submit button to view the results. The calculator for ionization constants has been chosen for this demonstration as shown in the screen shot below.



**Calculate Chemical Speciation**

Chemical Editor | Chemical Speciation

*Check one or more calculation methods to run, then hit submit below*

Calculate Ionization Constants (pKa) Parameters

Number of decimals for pKa:	2
pH Lower Limit:	0
pH Upper Limit:	14
pH Step Size:	0.2
Generate Major Microspecies at pH:	7.0
Isoelectric Point (pI)	0.5
pH Step Size for Charge Distribution:	0.5

The results of the ionization constant calculation are illustrated in the screen shots below:

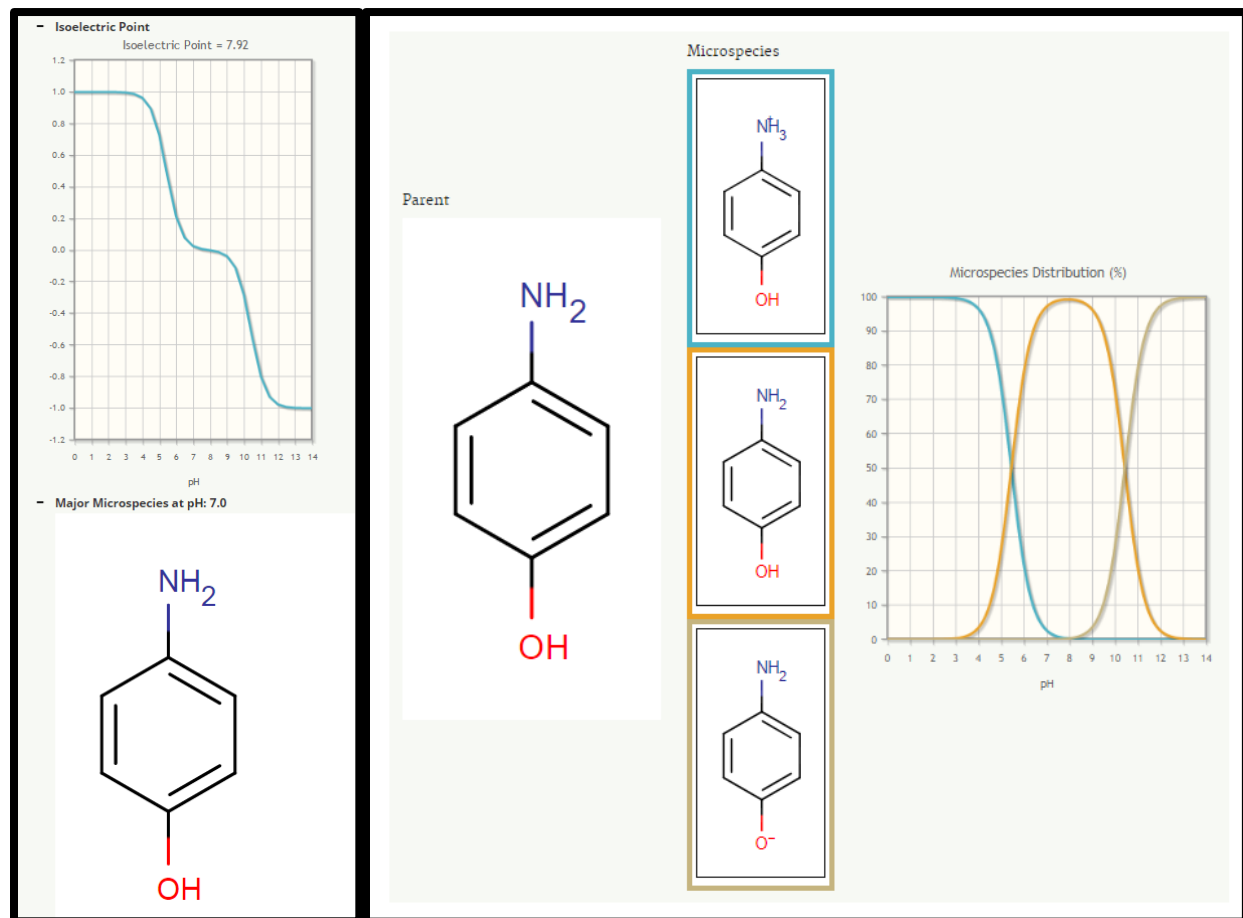
- **pKa Calculations:** Provides the chemical structure entered, the generated microspecies, and the distribution of microspecies as a function of pH over the pH range specified. Results are color coded.
- **Isoelectric Point:** The isoelectric point is provided as well as a graph illustrating the charge on the chemical as a function of pH.
- **Major Microspecies:** The dominant microspecies formed at the pH selected.

## - Results

### - pKa

Basic pKa Value(s): [5.43]

Acidic pKa Value(s): [10.4]



### 6.3. Calculate Dominant Tautomer Distribution

The CTS uses ChemAxon's tautomerization engine for the calculation of the dominant tautomer distribution. For this demonstration, 1-phenylbutane-1,3-dione has been entered into the Chemical Editor as shown in the screen shot below.

#### Lookup Chemical

Enter a SMILES, Name, or CAS# and Click Here

#### Draw Chemical Structure

Draw a chemical structure and Click Here

The image shows a chemical drawing editor interface. In the center, the chemical structure of 1-phenylbutane-1,3-dione is displayed. It consists of a benzene ring connected to a methylene group (-CH2-), which is then connected to a methine group (-CH-) that has both a methyl group (-CH3) and a carbonyl group (=O) attached to it. The drawing editor includes a toolbar at the top with various icons for drawing and editing, and a vertical menu on the right side listing chemical elements: H, C, N, O, S, F, P, Cl, Br, I, \*, and A.

#### Results

Entered Chemical	<input type="text" value="1-phenylbutane-1,3-dione"/>
Initial SMILES	<input type="text" value="CC(=O)CC(=O)C1=CC=CC=C1"/>
Standardized SMILES	<input type="text" value="CC(=O)CC(=O)C1=CC=CC=C1"/>

Clicking the Next button brings up the Calculate Chemical Speciation Workflow Inputs page. After selecting the Calculate Dominant Tautomer Distribution option, enter a limit for the number of possible tautomers and the pH value for which the distribution will be calculated. The default values are pH 7.0 and a limit of 100 tautomers as shown in the screen shot below.

<input type="checkbox"/> Calculate Ionization Constants (pKa) Parameters	
Number of decimals for pKa:	<input type="text" value="2"/>
pH Lower Limit:	<input type="text" value="0"/>
pH Upper Limit:	<input type="text" value="14"/>
pH Step Size:	<input type="text" value="0.2"/>
Generate Major Microspecies at pH:	<input type="text" value="7.0"/>
Isoelectric Point (pI) pH Step Size for Charge Distribution:	<input type="text" value="0.5"/>

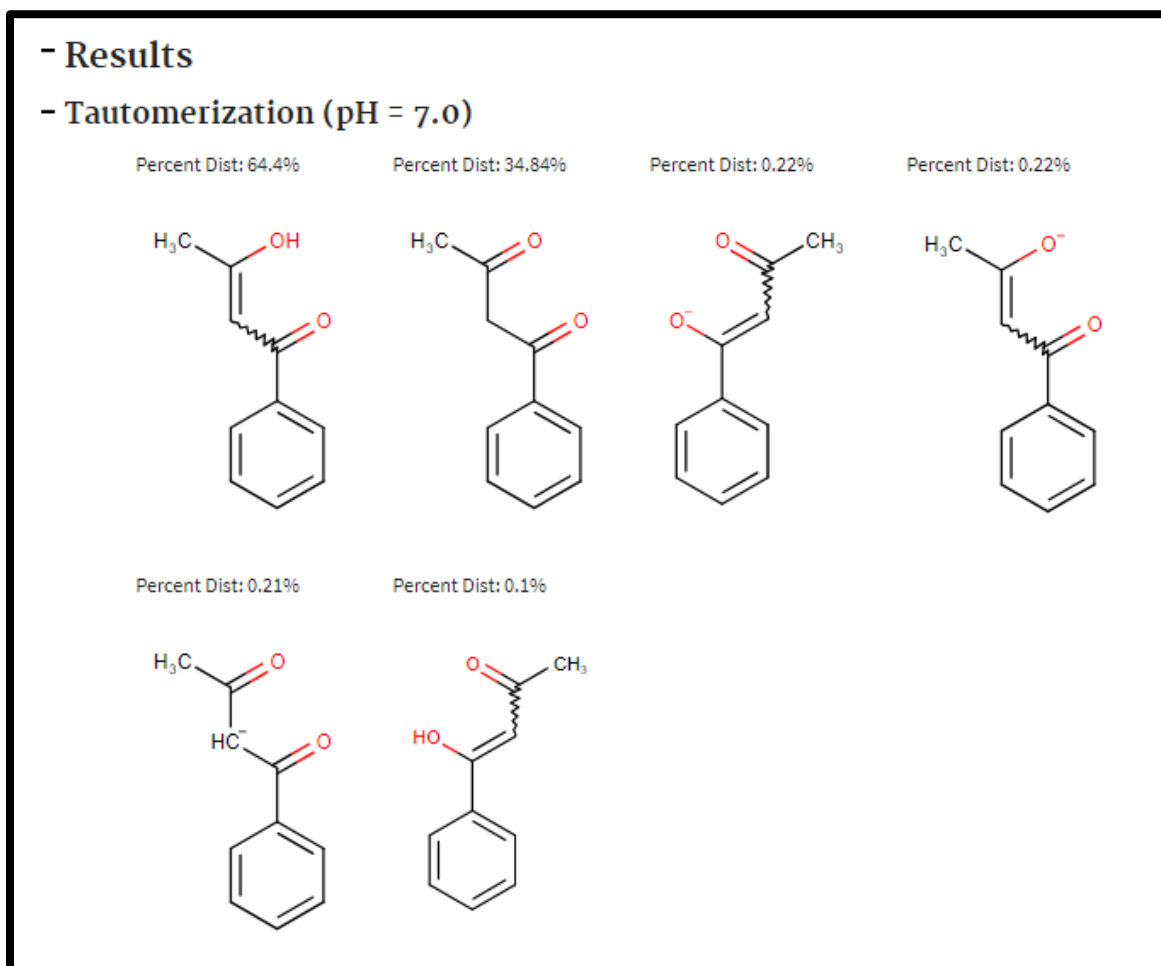
<input checked="" type="checkbox"/> Calculate Dominant Tautomer Distribution	
Maximum Number of Structures:	<input type="text" value="100"/>
at pH:	<input type="text" value="7.0"/>

<input type="checkbox"/> Calculate Stereoisomers	
Maximum Number of Structures:	<input type="text" value="100"/>

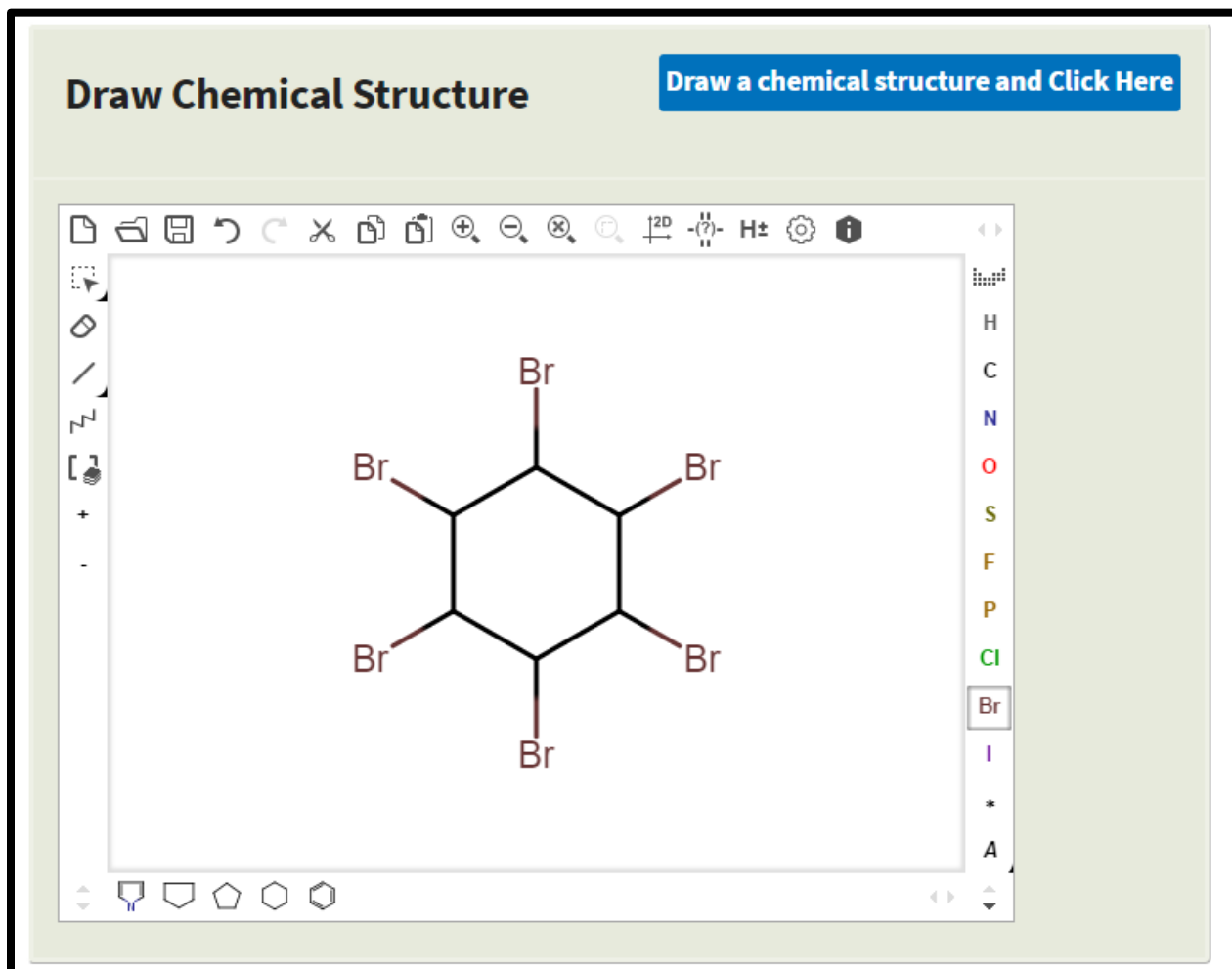
Click on the Submit button to view the output page for the tautomerization distribution based on the user-defined values.

The Output screen shows the User Inputs (see screen shot above) as well as the tautomer distribution for the chemical of interest (see screen shot below). The individual structures can be enlarged by placing the cursor on top of the structure. The molecular information including the formula, IUPAC name, mass and SMILES string is also provided.



## 6.4. Calculate Stereoisomers

For this demonstration, 1,2,3,4,5,6-hexabromocyclohexane has been entered into the Chemical Editor as shown in the screen shot below.





<input type="checkbox"/> Calculate Ionization Constants (pKa) Parameters	
Number of decimals for pKa:	<input type="text" value="2"/>
pH Lower Limit:	<input type="text" value="0"/>
pH Upper Limit:	<input type="text" value="14"/>
pH Step Size:	<input type="text" value="0.2"/>
Generate Major Microspecies at pH:	<input type="text" value="7.0"/>
Isoelectric Point (pI) pH Step Size for Charge Distribution:	<input type="text" value="0.5"/>

<input type="checkbox"/> Calculate Dominant Tautomer Distribution	
Maximum Number of Structures:	<input type="text" value="100"/>
at pH:	<input type="text" value="7.0"/>

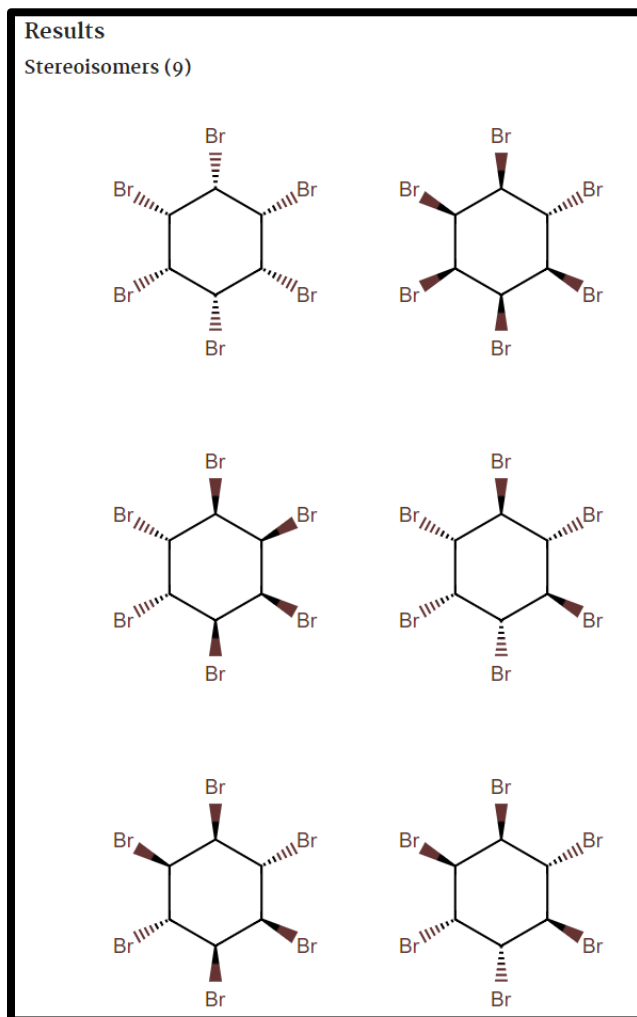
  

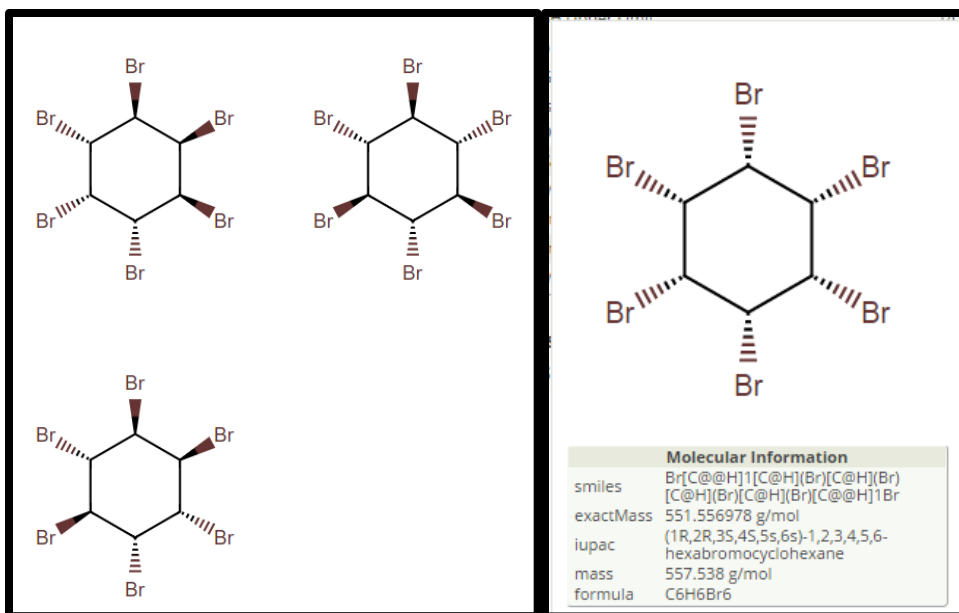
<input checked="" type="checkbox"/> Calculate Stereoisomers	
Maximum Number of Structures:	<input type="text" value="100"/>

After selecting the Calculate Stereoisomers option, enter a limit for the maximum number of possible stereoisomers. The default value is 100 stereoisomers as shown in the screen shot above.

Clicking on the Next button provides the results of the calculation, which illustrate that 1,2,3,4,5,6-hexabromocyclohexane can exist as nine different stereo isomers as shown in the screen shot below. The individual structures can be enlarged by placing the cursor over the

structure. The molecular information including the formula, IUPAC name, mass and SMILES string is also provided.





## 6.5. Calculate Physicochemical Properties Workflow

Selection of the Calculate Physicochemical Properties Workflow provides the screen shot below illustrating the workflow overview. Click on the “Run single chemical” link to submit a single chemical for processing, or click on the “Run batch file” link to submit a batch file.

### CTS: Chemical Transformation Simulator

**About**  
CTS Home  
About CTS

**Execute CTS Workflows**  
Calculate Chemical Speciation  
**Calculate Physicochemical Properties**  
Run single chemical  
Run batch file  
Generate Transformation Products

**Documentation**  
Download CTS User's Guide (PDF)  
CTS Modules  
Physicochemical Calculators  
Reaction Libraries  
API Documentation  
Manuscripts  
Version History  
Help

## Calculate Physicochemical Properties Overview

This workflow allows you to enter an individual chemical through the Chemical Editor (see below) or through batch mode (select Batch tab). Based on your selection of the available physicochemical calculators and physicochemical properties, you will be able to generate calculated physicochemical properties of interest.

```
graph TD; CE[Chemical Editor] --> SPC[Select Physicochemical Calculators]; SPC --> SPP[Select Physicochemical Properties]; SPP --> PPC[Physicochemical Properties Calculator];
```

The flowchart illustrates the workflow for calculating physicochemical properties. It starts with the 'Chemical Editor' (orange box) which leads to 'Select Physicochemical Calculators' (green box). From there, the process moves to 'Select Physicochemical Properties' (green box), which then leads to the 'Physicochemical Properties Calculator' (orange box).

For this demonstration, 1-methoxy-2,4-dinitrobenzene has been entered into the Chemical Editor. The results are shown in the screen shots below. Select the Next button to choose the physiochemical calculators and physicochemical properties of interest.

## CTS: Chemical Transformation Simulator

### About

[CTS Home](#)

[About CTS](#)

### Execute CTS Workflows

[Calculate Chemical Speciation](#)

**[Calculate Physicochemical Properties](#)**

[Run single chemical](#)

[Run batch file](#)

[Generate Transformation Products](#)

### Documentation

[Download CTS User's Guide \(PDF\)](#)

[CTS Modules](#)

[Physicochemical Calculators](#)

[Reaction Libraries](#)

[API Documentation](#)

[Manuscripts](#)

[Version History](#)

[Help](#)

## Calculate Physicochemical Properties

[Chemical Editor](#) | [Physicochemical Calculators](#)

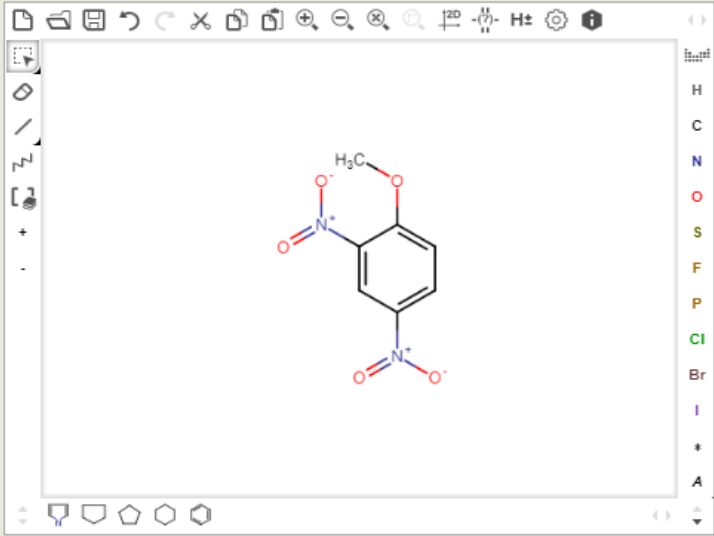
*Enter a SMILES, Name, or CAS#, or draw a chemical, then click the button located in the top right of the chosen method to get results. Click the "next" button below or click the "Physicochemical Calculators" link above to continue through the workflow.*

### Lookup Chemical

[Enter a SMILES, Name, or CAS# and Click Here](#)

### Draw Chemical Structure

[Draw a chemical structure and Click Here](#)



## Results

Entered Chemical	<input type="text" value="1-methoxy-2,4-dinitrobenzene"/>
Initial SMILES	<input type="text" value="COC1=CC=C(C=C1[N+](O-)=O)[N+](O-)=O"/>
Standardized SMILES	<input type="text" value="COC1=CC=C(C=C1[N+](O-)=O)[N+](O-)=O"/>
Preferred Name	<input type="text" value="2,4-Dinitroanisole"/>
IUPAC	<input type="text" value="1-methoxy-2,4-dinitrobenzene"/>
Formula	<input type="text" value="C7H6N2O5"/>
Preferred CAS	<input type="text" value="119-27-7"/>
Associated CAS	<input type="text" value="119-27-7"/>
DTXSID	<input type="text" value="DTXSID9041366"/>
Average Mass (g/mol)	<input type="text" value="198.134"/>
Monoisotopic Mass (g/mol)	<input type="text" value="198.027671301"/>

[Clear](#)[Next](#)

Use the Calculate Physicochemical Properties Workflow Inputs screen to select physicochemical properties and the physicochemical calculators of interest as shown in the screen shot below. Selection of the All button for the physicochemical properties selects all properties no matter which calculators are chosen, although only the available properties from each calculator will be calculated. See Table 1 for a summary of the calculators and calculation methods used in the Physicochemical Properties Calculator.

**About**

[CTS Home](#)

[About CTS](#)

**Execute CTS Workflows**

[Calculate Chemical Speciation](#)

**Calculate Physicochemical Properties**

[Run single chemical](#)

[Run batch file](#)

[Generate Transformation Products](#)

**Documentation**

[Download CTS User's Guide \(PDF\)](#)

[CTS Modules](#)

[Physicochemical Calculators](#)

[Reaction Libraries](#)

[API Documentation](#)

[Manuscripts](#)

[Version History](#)

[Help](#)

## Calculate Physicochemical Properties

Chemical Editor | Physicochemical Calculators

Check chemical properties and which calculators to compute them, then hit submit

	<input checked="" type="checkbox"/> ChemAxon	<input checked="" type="checkbox"/> EPI Suite	<input checked="" type="checkbox"/> TEST	<input checked="" type="checkbox"/> OPERA	<input type="checkbox"/> Geometric Mean	<input checked="" type="checkbox"/> Measured
<input checked="" type="checkbox"/> All						
<b>Neutral Species Inputs:</b>						
<input checked="" type="checkbox"/> Melting Point (°C)						
<input checked="" type="checkbox"/> Boiling Point (°C)						
<input checked="" type="checkbox"/> Water Solubility (mg/L)						
<input checked="" type="checkbox"/> Vapor Pressure (mmHg)						
<input checked="" type="checkbox"/> Ionization Constant						
<input checked="" type="checkbox"/> Henry's Law Constant (atm·m <sup>3</sup> /mol)						
<input checked="" type="checkbox"/> Octanol/Water Partition Coefficient (log)						
<input checked="" type="checkbox"/> Organic Carbon Partition Coefficient (log(L/kg))						
<input checked="" type="checkbox"/> Bioconcentration Factor (log(L/kg))						
<input checked="" type="checkbox"/> Bioaccumulation Factor (log(L/kg))						
<b>pH-Dependent Inputs</b> at pH: <input type="text" value="7.0"/>						
<input checked="" type="checkbox"/> Octanol/Water Distribution Coefficient (log)						
<input checked="" type="checkbox"/> Water Solubility (mg/L)						
	Available	Unavailable				

Clear
Back
Submit

Application or Website	Version	Model	Property	Calculation Method	References
ChemAxon Plugin Calculators	16.10.17	KLOP	$K_{ow}$ , $D_{ow}$	Group Contribution: MLR with fragment counts as descriptors	Klopman et al. (1994)
		VG	$K_{ow}$ , $D_{ow}$	Group Contribution: MLR with fragment counts as descriptors	Viswanadhan et al. (1989)
		PHYS	$K_{ow}$ , $D_{ow}$	Group Contribution: MLR with fragment counts as descriptors	Based on Viswanadhan et al. (1989) with PHYSPROP as training set
		Solubility Predictor	WS	Group Contribution: MLR with atom counts as descriptors	Hou et al. (2004)
		pKa Predictor	pK <sub>a</sub>	Ionization site-specific regression equations	Szegezdi and Csizmadia (2004, 2007)
EPI Suite™	4.11	KOWWIN™	$K_{ow}$	Group Contribution: MLR with fragment counts as descriptors	Meylan and Howard (1995)
		WATERNT	WS	Group Contribution: MLR with fragment counts as descriptors	US EPA (2012)
		WSKOW	WS	MLR with log Kow, MP and MW as descriptors	Meylan et al. (1996); US EPA (2012)
		KOCWIN	$K_{oc}$	MCI-based QSAR; MLR with log Kow as descriptor	Meylan et al. (1992)
		MPBPVP	MP, BP, VP	Group Contribution: MLR with fragment counts as descriptors for MP and BP; VP from nonlinear function of BP	US EPA (2012)
		HENRYWIN	HLC	Bond Contribution: MLR with bond counts as descriptors	US EPA (2012)
		BCFBAF™	BCF and BAF	MLR with log Kow as descriptor; Arnot-Gobas method using upper trophic values	US EPA (2012)
T.E.S.T.	5.1.2 <sup>†</sup>	Single Model	MP, BP, WS, VP, BCF	Hierarchical Clustering with similar chemicals	U.S. EPA (2020)
		Group Contribution	MP, BP, WS, VP, BCF	Group Contribution: MLR with fragment counts as descriptors	Martin and Young (2001)
		Hierarchical Clustering	MP, BP, WS, VP, BCF	Hierarchical Clustering	Martin et al. (2008)
		Nearest Neighbor	MP, BP, WS, VP, BCF	Average property value for 3 most similar molecules based on cosine similarity coefficient	Martin et al. (2008); U.S. EPA (2020)
OPERA	2.9 <sup>‡</sup>	N/A	MP, BP, WS, VP, pK <sub>a</sub> , HLC, $K_{ow}$ , $K_{oc}$ , BCF, $D_{ow}$	Weighted k-nearest neighbor using 2D descriptors from PaDEL	Mansouri et al. (2018)

Table 1. Summary of the calculators and calculation methods used in the Physicochemical Properties module.

<sup>†</sup>T.E.S.T. calculations are retrieved through webservice from EPA's CompTox Chemistry Dashboard. The values shown on CTS reflect the current version of T.E.S.T. on the Dashboard.

<sup>\*</sup>OPERA values are retrieved through either a database of pre-calculated values or calculated on-the-fly, depending on the chemical. See below for details.



After selection of the physicochemical properties and calculators, selection of the Calculate data button provides the physicochemical properties output as illustrated in the screen shots below. Selection of the Measured checkbox provides available experimental data from the PHYSPROP database.

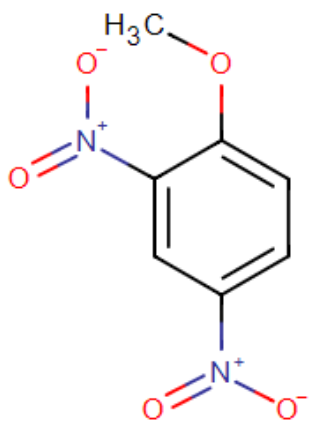
A database of pre-calculated values from the OPERA calculator for several thousand common chemicals has been implemented to improve the speed of retrieval from OPERA. If the given chemical is not in the pre-calculated database, the OPERA calculator will run the models on-the-fly, causing slower retrieval times for OPERA values. OPERA values for pH-dependent octanol-water partition coefficient ( $\log D$ , also called  $D_{ow}$  or  $d_{ow}$ ) are only available at pH 5.5 and 7.4.

The geometric mean of the predicted values (not including any measured data or ionization constants) for each selected property from the selected calculators will be automatically calculated and displayed under the Geometric Mean column when predicted values are requested. For some chemicals, the value of the melting point and/or boiling point predicted by one or more of the calculators may be a negative value in units of Celsius. Therefore, to calculate the geometric mean of melting point and boiling point, the calculated values are converted from degrees Celsius to Kelvin before calculating the geometric mean and converting that value back to degrees Celsius.

### Calculate Physicochemical Properties Output

**Calculate Physicochemical Properties**  
Tuesday, 2019-July-02 15:55:27 (EST)

- User Inputs



Molecular Information	
Entered chemical	1-methoxy-2,4-dinitrobenzene
Initial SMILES	<chem>COC1=CC=C(C=C1[N+](=O)[O-])[N+](=O)[O-]</chem>
Standardized SMILES	<chem>COC1=CC=C(C=C1[N+](=O)[O-])[N+](=O)[O-]</chem>
IUPAC	1-methoxy-2,4-dinitrobenzene
Formula	C7H6N2O5
CAS #	119-27-7
Average Mass	198.134
Monoisotopic Mass	198.027671301

### - Physicochemical Properties Results

	<input type="checkbox"/>	<input type="checkbox"/>	<input type="checkbox"/>	<input type="checkbox"/>	<input type="checkbox"/>	<input type="checkbox"/>
	ChemAxon	EPI Suite	TEST	OPERA	Geometric Mean	Measured
<input type="checkbox"/> All						
<b>Neutral Species Inputs:</b>						
<input type="checkbox"/> Melting Point (°C)		96.56	78.20 HC 87.50 NN 80.30 GC	95.09	87.45	94.50
<input type="checkbox"/> Boiling Point (°C)		319.62	286.50 HC 308.70 NN 315.00 GC	304.17	306.68	208.00
<input type="checkbox"/> Water Solubility (mg/L)	2.68e+2	3.66e+2 WSKOW 2.58e+2 WATERNT	9.54e+1 HC 7.97e+1 NN 5.94e+2 GC	3.21e+2	2.33e+2	1.55e+2
<input type="checkbox"/> Vapor Pressure (mmHg)		1.38e-4	2.06e-4 HC 1.14e-4 NN 2.17e-4 GC	3.05e-4	1.85e-4	N/A
<input type="checkbox"/> Ionization Constant	none			pKa <sub>1</sub> : 7.25		
<input type="checkbox"/> Henry's Law Constant (atm·m <sup>3</sup> /mol)		4.98e-9		5.52e-7	5.23e-8	N/A
<input type="checkbox"/> Octanol/Water Partition Coefficient (log)	1.74 KLOP 1.70 VG 1.65 PHYS	1.71		1.94	1.75	N/A
<input type="checkbox"/> Organic Carbon Partition Coefficient (log(L/kg))		2.38 MCI 2.37 KOW		2.53	2.42	
<input type="checkbox"/> Bioconcentration Factor (log(L/kg))		0.80 REG 0.68 A-G	0.73 SM 0.10 HC 0.48 NN 0.96 GC	0.98	0.68	
<input type="checkbox"/> Bioaccumulation Factor (log(L/kg))		0.68 A-G			0.68	
<b>pH-Dependent Inputs at pH: <input style="width: 30px;" type="text" value="7.0"/></b>						
<input type="checkbox"/> Octanol/Water Distribution Coefficient (log)	1.74 KLOP 1.70 VG 1.65 PHYS			1.56	1.66	
<input type="checkbox"/> Water Solubility (mg/L)	-2.87e+3				-2.87e+3	
	Available	Unavailable				

## 6.6. Generate Transformation Products Workflow

Selection of the Generate Transformation Products Workflow provides the screen shot below illustrating the workflow overview. Click on the “Run single chemical” link to submit a single chemical for processing, or click on the “Run batch file” link to submit a batch file.

### About

- CTS Home
- About CTS

### Execute CTS Workflows

- Calculate Chemical Speciation
- Calculate Physicochemical Properties

### Generate Transformation Products

- Run single chemical
- Run batch file

### Documentation

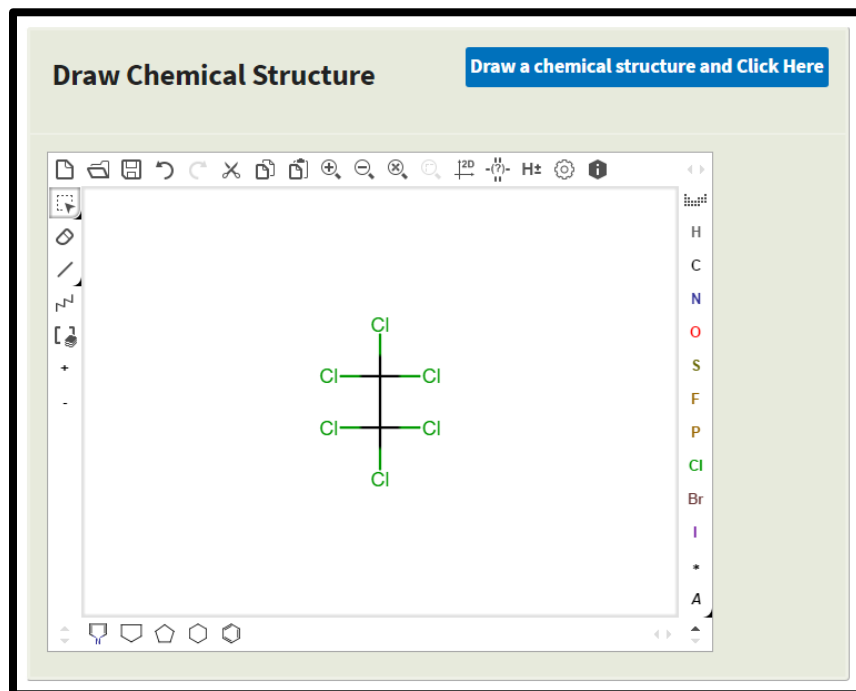
- Download CTS User's Guide (PDF)
- CTS Modules
- Physicochemical Calculators
- Reaction Libraries
- API Documentation
- Manuscripts
- Version History
- Help

## Generate Transformation Products Overview

This workflow allows you to predict transformation products based on the selection and execution of the reaction libraries that encode the process science for transformation processes. You have the option to enter an individual chemical through the Chemical Editor or through batch mode (select Batch tab). Entering the Reaction Pathway Simulator will allow you to select your reaction library of interest based on your selection of reaction conditions.

```
graph TD; A[Define Reaction Conditions] --> B[Select Reaction Libraries]; B --> C[Reaction Pathway Simulator]; C --> D[Physicochemical Properties Calculator]; C --> E[Chemical Editor]; E --> D;
```

For this demonstration, hexachloroethane has been entered into the Chemical Editor as illustrated in the screen shot below.



The first required input is the selection of one or more reaction libraries based on the transformation pathways of interest. Reaction libraries have been developed for the environmental transformation processes of abiotic hydrolysis, abiotic reduction, and direct photolysis (unranked and ranked). A Spontaneous reaction library, which is intended to be combined with other CTS reaction libraries, is also available to capture the rapid transformation of intermediates that form due to other transformation processes (e.g., hydrolysis or photolysis). A reaction library for human phase I metabolism that was developed by ChemAxon is also available through the RPS. Additionally, linkages are available to the EnviPath prediction system for environmental microbial biodegradation pathways and to the BioTransformer tool, which includes four independent transformation modules for metabolite prediction: Phase I (CYP450) metabolism in mammals, Phase II (CYP450) conjugation reactions in mammals, gut microbial metabolism, and Enzyme Commission (EC)-Based reactions. Finally, two chemical class-specific libraries have been developed to predict the likely environmental and metabolic transformation products of per- and polyfluoroalkyl substances (PFAS).

There are three available options for the selection of one or multiple reaction libraries (see screen shot below):

- Reaction System Conditions
- OCSPP Harmonized Guidelines
- User Selected (Advanced)

The OCSPP Harmonized Guidelines specify EPA/OECD-recommended methods to generate data that is submitted to EPA to support:

- The registration of a pesticide under the Federal Insecticide, Fungicide and Rodenticide Act (FIFRA);
- The decision-making process supporting potential regulation of an industrial chemical under the Toxic Substances Control Act (TSCA)

Options for selecting Reaction Libraries		
<input type="radio"/> Reaction System Guidelines	<input type="radio"/> OCSPP Harmonized Guidelines	<input type="radio"/> User selected (advanced)

Reaction Libraries	
<input type="checkbox"/>	Abiotic Hydrolysis
<input type="checkbox"/>	Abiotic Reduction
<input type="checkbox"/>	Direct Photolysis (unranked)
<input type="checkbox"/>	Direct Photolysis (ranked)
<input type="checkbox"/>	Aerobic Biodegradation (under development)
<input type="checkbox"/>	Anaerobic Biodegradation (under development)
<input type="checkbox"/>	Human Phase 1 Metabolism
<input type="checkbox"/>	Biotransformer Mammalian Metabolism <span>Phase I (CYP450) Transformation</span> <input type="button" value="v"/>
<input type="checkbox"/>	Envipath microbial biotransformation

Chemical Class-Specific Reaction Libraries	
<input type="checkbox"/>	PFAS Environmental
<input type="checkbox"/>	PFAS Metabolism

Reaction Options	
<input type="button" value="1 v"/>	Max number of generations
<input type="checkbox"/>	Include estimated transformation half-life (if available)

## 6.6.1 Reaction Library Selection

Selection of reaction libraries through the Reaction System Conditions option provides two reaction system types: Environmental or Mammalian.

Under the Environmental Reaction System option, three respiration types are available: Aerobic (abiotic), Aerobic (biotic), or Anaerobic. When the respiration type is selected, the system identifies the relevant reaction libraries. For the Aerobic (abiotic) respiration type, the relevant libraries are abiotic hydrolysis and direct photolysis. For the Aerobic (biotic) reaction type, predicted products are obtained from the EnviPath prediction system for environmental microbial biodegradation pathways. For the Anaerobic respiration type, the relevant reaction libraries are abiotic hydrolysis and abiotic reduction (see screen shot below).

**Options for selecting Reaction Libraries**

Reaction System Guidelines     OCSPH Harmonized Guidelines     User selected (advanced)

**Reaction system**

Environmental     Mammalian

**Select a respiration type**

Anaerobic ▼

**Reaction Libraries**

<input checked="" type="checkbox"/>	Abiotic Hydrolysis
<input checked="" type="checkbox"/>	Abiotic Reduction
<input type="checkbox"/>	Direct Photolysis (unranked)
<input type="checkbox"/>	Direct Photolysis (ranked)
<input type="checkbox"/>	Aerobic Biodegradation (under development)
<input type="checkbox"/>	Anaerobic Biodegradation (under development)
<input type="checkbox"/>	Human Phase 1 Metabolism
<input type="checkbox"/>	Biotransformer Mammalian Metabolism <span>Phase I (CYP450) Transformation ▼</span>
<input type="checkbox"/>	Envipath microbial biotransformation

Under the Mammalian Reaction System option, user has the choice of selecting between ChemAxon Metabolizer or Biotransformer libraries. Selection of ChemAxon Metabolizer opens the window with the human phase I metabolism reaction library selected as shown in the screenshot below.

**Options for selecting Reaction Libraries**

Reaction System Guidelines     OCSPP Harmonized Guidelines     User selected (advanced)

**Reaction system**

Environmental     Mammalian

**Select a mammalian library**

ChemAxon Metabolizer ▼

**Reaction Libraries**

<input type="checkbox"/>	Abiotic Hydrolysis
<input type="checkbox"/>	Abiotic Reduction
<input type="checkbox"/>	Direct Photolysis (unranked)
<input type="checkbox"/>	Direct Photolysis (ranked)
<input type="checkbox"/>	Aerobic Biodegradation (under development)
<input type="checkbox"/>	Anaerobic Biodegradation (under development)
<input checked="" type="checkbox"/>	Human Phase 1 Metabolism
<input type="checkbox"/>	Biotransformer Mammalian Metabolism <span>Phase I (CYP450) Transformation ▼</span>
<input type="checkbox"/>	Envipath microbial biotransformation

Selection of the Biotransformer option opens the window with Biotransformer mammalian metabolism selected, prompting the user to select one from four library options: Human Gut Microbial Transformation, PHASE II Transformation, EC-Based Transformation, and Phase I (CYP450) Transformation.

**Options for selecting Reaction Libraries**

Reaction System Guidelines    
  OCSPH Harmonized Guidelines    
  User selected (advanced)

---

**Reaction system**

Environmental    
  Mammalian

---

**Select a mammalian library**

**Reaction Libraries**

<input type="checkbox"/>	Abiotic Hydrolysis
<input type="checkbox"/>	Abiotic Reduction
<input type="checkbox"/>	Direct Photolysis (unranked)
<input type="checkbox"/>	Direct Photolysis (ranked)
<input type="checkbox"/>	Aerobic Biodegradation (under development)
<input type="checkbox"/>	Anaerobic Biodegradation (under development)
<input type="checkbox"/>	Human Phase 1 Metabolism
<input checked="" type="checkbox"/>	Biotransformer Mammalian Metabolism
<input type="checkbox"/>	Envipath microbial biotransformation

Human Gut Microbial Transformation ▾  
 Phase I (CYP450) Transformation  
 EC-Based Transformation  
 PHASE II Transformation  
 Human Gut Microbial Transformation

The second option for the selection of reaction libraries is through the selection of the Office of Chemical Safety and Pollution Prevention (OCSPH) Fate, Transport, and Transformation (Series 835) or Metabolism and Pharmacokinetics (Series 870.7485) Guidelines.



Selection of the Fate, Transformation Series provides three options:

- Hydrolysis (835.2120 or 835.2240)
- Direct Photolysis (835.2210 or 835.2240)
- Aerobic Transformation (835.4100, 835.3180, 835.3190, 835.3280)
- Anaerobic Transformation (835.4200, 835.4400, 835.3280, 835.5154)

As an example, selection of the Anaerobic Transformation (835.4200, 835.4400, 835.3280, 835.5154) shows that both the abiotic hydrolysis and abiotic reduction are appropriate selections for this option as shown in the screen shot below.

**Options for selecting Reaction Libraries**

Reaction System Guidelines     OCSPP Harmonized Guidelines     User selected (advanced)

**OCSPP Harmonized Guidelines**

Fate, Transport, and Transformation (Series 835)     Metabolism and Pharmacokinetics (Series 870.7485)

**Fate, Transport, and Transformation**

Anaerobic Transformation (835.4200, 835.4400, 835.3280, 835.5154) ▼

**Reaction Libraries**

<input checked="" type="checkbox"/>	Abiotic Hydrolysis
<input checked="" type="checkbox"/>	Abiotic Reduction
<input type="checkbox"/>	Direct Photolysis (unranked)
<input type="checkbox"/>	Direct Photolysis (ranked)
<input type="checkbox"/>	Aerobic Biodegradation (under development)
<input type="checkbox"/>	Anaerobic Biodegradation (under development)
<input type="checkbox"/>	Human Phase 1 Metabolism
<input type="checkbox"/>	Biotransformer Mammalian Metabolism <input type="text" value="Phase I (CYP450) Transformation"/> ▼
<input type="checkbox"/>	Envipath microbial biotransformation

Selection of Metabolism and Pharmacokinetics (Series 870.7485) provides two options: ChemAxon Metabolizer or Biotransformer. Selection of ChemAxon Metabolizer provides one option for selection of a reaction library (i.e., Human Phase I Metabolism) as shown in the screen shot below.

**Options for selecting Reaction Libraries**

Reaction System Guidelines     OCSPP Harmonized Guidelines     User selected (advanced)

**OCSPP Harmonized Guidelines**

Fate, Transport, and Transformation (Series 835)     Metabolism and Pharmacokinetics (Series 870.7485)

**Select a mammalian library**

ChemAxon Metabolizer ▼

**Reaction Libraries**

<input type="checkbox"/>	Abiotic Hydrolysis
<input type="checkbox"/>	Abiotic Reduction
<input type="checkbox"/>	Direct Photolysis (unranked)
<input type="checkbox"/>	Direct Photolysis (ranked)
<input type="checkbox"/>	Aerobic Biodegradation (under development)
<input type="checkbox"/>	Anaerobic Biodegradation (under development)
<input checked="" type="checkbox"/>	Human Phase 1 Metabolism
<input type="checkbox"/>	Biotransformer Mammalian Metabolism <span>Phase I (CYP450) Transformation ▼</span>
<input type="checkbox"/>	Envipath microbial biotransformation

The third option for the selection of reaction libraries is through the selection of the “User selected” button as shown in the screen shot below. This option provides the ability to select amongst the currently available reaction libraries. Along with the libraries based on

transformation type, class-specific libraries are available for PFAS compounds undergoing environmental transformation or metabolism.

After reaction library selection, three additional options are available in the Reaction Options box:

- **Max number of generations:** A dropdown list allows the user to select the maximum number of generations of transformation products that will be generated. The default value is set at one, and the maximum value is four for most libraries. For the Direct Photolysis libraries, the maximum value is two to avoid producing an excess of products.
- **Select tree type:** a dropdown list allows the user to select either a “Simplified Tree” or a “Full Tree” option. When the “Simplified Tree” option is selected, the resulting transformation product tree will show only one instance of a specific parent/product relationship within a single generation. This means that when a particular product can be formed from a parent by more than reaction scheme in a single generation, the “Simplified Tree” will display that product only once, rather than showing the formation of the product from the same parent multiple times. However, when a product can be formed within a subsequent generation or from a different parent within the same generation, multiple copies of the product will be shown in the tree. This output is helpful for those who want a cleaner view of transformation products while looking for a specific product, or for users interested in collecting unique products. When “Full Tree” option is selected, the resulting transformation product tree will display all transformation pathways with all products.
- **Include estimated transformation half-life (if available):** When this box is checked, CTS will provide estimated reaction scheme-specific transformation half-life values for the chemical of interest and transformation products. Currently, the only available estimated half-life values are for selected schemes in the abiotic hydrolysis reaction library. Schemes outside of this scope will report the default qualitative descriptor instead (see section 6.6.2, page 49). The estimated half-life values are obtained from the EPI Suite™ HYDROWIN module, which calculates hydrolysis rate constants using fragment-based QSAR models (Drossman et al., 1988). The table below provides a crosswalk between the relevant schemes within the CTS Hydrolysis Reaction library and the corresponding HYDROWIN model. Importantly, the option to show estimated transformation half-life values is only available when viewing the results as Full Tree output.

CTS Hydrolysis Scheme Name	HYDROWIN Model
Halogenated Aliphatics: Nucleophilic Substitution (no adjacent X)	HALOMETHANE or ALKYL HALIDE
Halogenated Aliphatics: Nucleophilic Substitution (vicinal X)	ALKYL HALIDE

Halogenated Aliphatics: Nucleophilic Substitution (geminal X)	ALKYL HALIDE
Halogenated Aliphatics: Elimination	ALKYL HALIDE
Epoxide Hydrolysis	EPOXIDE
Organophosphorus Ester Hydrolysis 1	Thiophosphate/Phosphate
Organophosphorus Ester Hydrolysis 2	Thiophosphate/Phosphate
Carboxylic Acid Ester Hydrolysis	ESTER
Anhydride Hydrolysis	ESTER
Carbamate Hydrolysis	CARBAMATE

## Options for selecting Reaction Libraries

- Reaction System Guidelines     OCSPP Harmonized Guidelines     User selected (advanced)

## Reaction Libraries

- |                                     |  |
|-------------------------------------|--|
| <input type="checkbox"/>            | Abiotic Hydrolysis   |
| <input checked="" type="checkbox"/> | Abiotic Reduction  |
| <input type="checkbox"/>            | Direct Photolysis (unranked)   |
| <input type="checkbox"/>            | Direct Photolysis (ranked)   |
| <input type="checkbox"/>            | Aerobic Biodegradation (under development)   |
| <input type="checkbox"/>            | Anaerobic Biodegradation (under development)                                       |
| <input type="checkbox"/>            | Human Phase 1 Metabolism   |
| <input type="checkbox"/>            | Biotransformer Mammalian Metabolism <span>Phase I (CYP450) Transformation ▼</span> |
| <input type="checkbox"/>            | Envipath microbial biotransformation   |

## Chemical Class-Specific Reaction Libraries

- |                          |                    |
|--------------------------|--------------------|
| <input type="checkbox"/> | PFAS Environmental |
| <input type="checkbox"/> | PFAS Metabolism    |

## Reaction Options

- |  |   |
|--|---|
| <input type="text" value="2 ▼"/>         | Max number of generations                                 |
| <input type="text" value="Full tree ▼"/> | Select tree type  |
| <input type="checkbox"/>                 | Include estimated transformation half-life (if available) |

[Clear](#)[Back](#)[Submit](#)

## 6.6.2 Output from the Generate Transformation Products Workflow

After selection of the reaction libraries and reaction options have been made, click the Submit button to generate transformation products. The screen shot below shows the upper portion of the output for the Generate Transformation Products workflow, which summarizes the input data and indicates the total number of products that are predicted. If “Total Products” is equal to zero, then the user is to assume the selected reaction processes do not occur for the parent chemical of interest.

For this demonstration, 3-acetamidophenyl acetate is the chemical of interest, and the selected reaction library is abiotic hydrolysis.

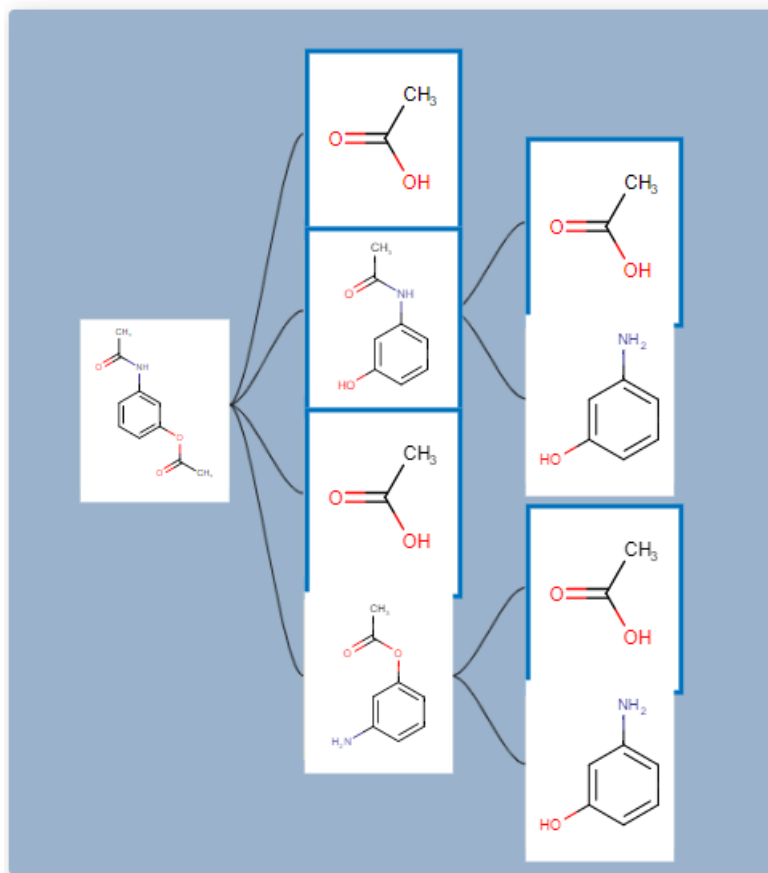
### - User Inputs

Molecular Information	
Entered chemical	3-acetamidophenyl acetate
Initial SMILES	<chem>CC(=O)NC1=CC(OC(C)=O)=CC=C1</chem>
Standardized SMILES	<chem>CC(=O)NC1=CC(OC(C)=O)=CC=C1</chem>
IUPAC	3-acetamidophenyl acetate
Formula	C10H11NO3
CAS #	6317-89-1
Average Mass	193.202 g/mol
Monoisotopic Mass	193.073893218 g/mol
Reaction Pathway Simulator	
Libraries	hydrolysis
Generation Limit	2
Include rates	none
Tree type	full_tree

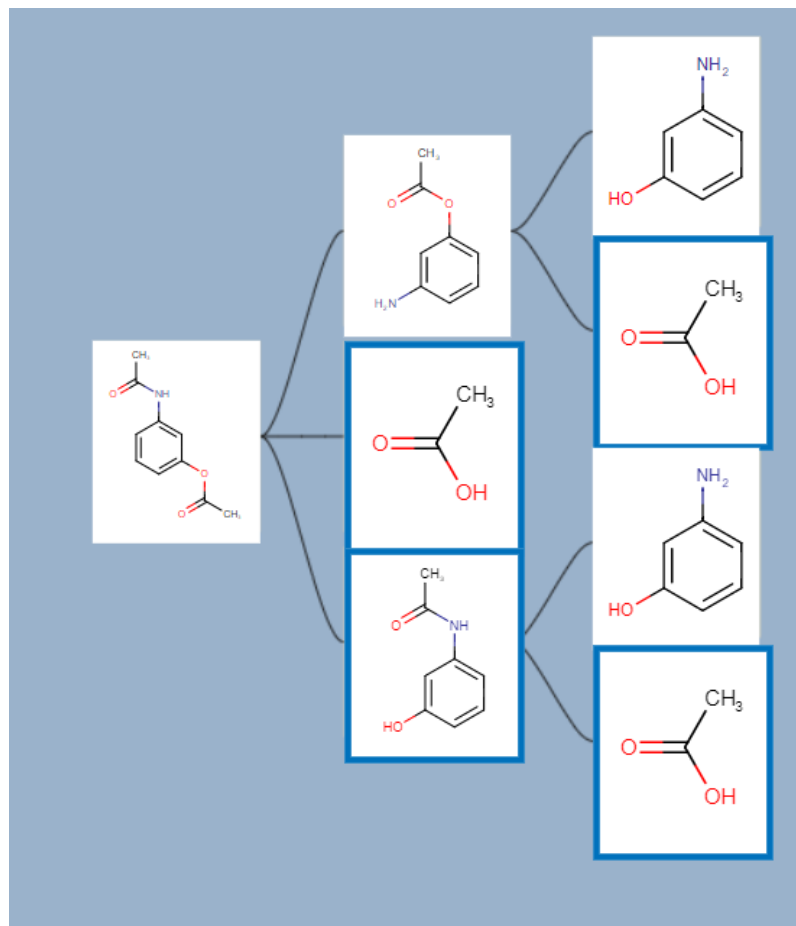
The lower portion of the output for the Generate Transformation Products workflow shows a reaction pathway map, and a dropdown menu can be used to select the number of generations displayed. The reaction pathway map displayed will either be the “Simplified Tree” or “Full Tree” that was selected by the user. In this demonstration, the “Full Tree” option was selected, so all predicted products are displayed.

**Display up to:**

2nd gen ▾

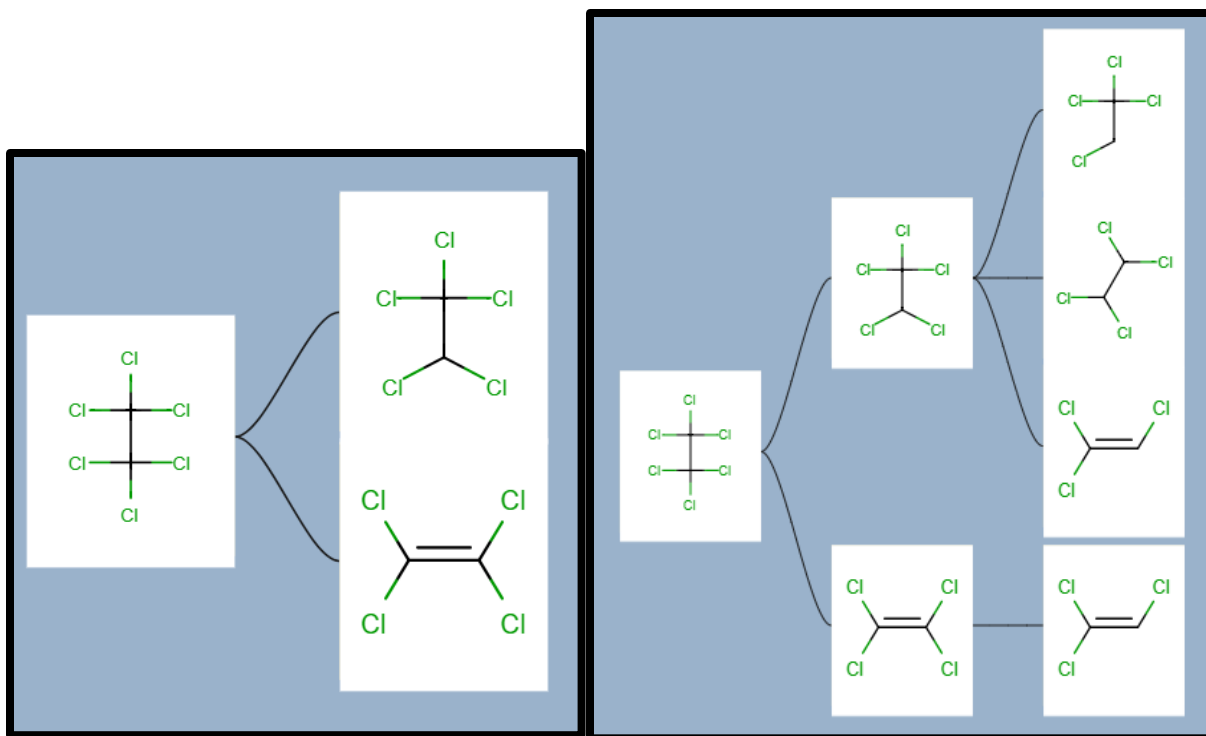
**Total Products:8****Unique Products:4****+ View Molecular Information****+ Calculate Physicochemical Properties**

If the Simplified Tree option was selected, replicate products are removed when they are formed within the same generation and from the same parent molecule; therefore, the number of displayed products per generation can be reduced.



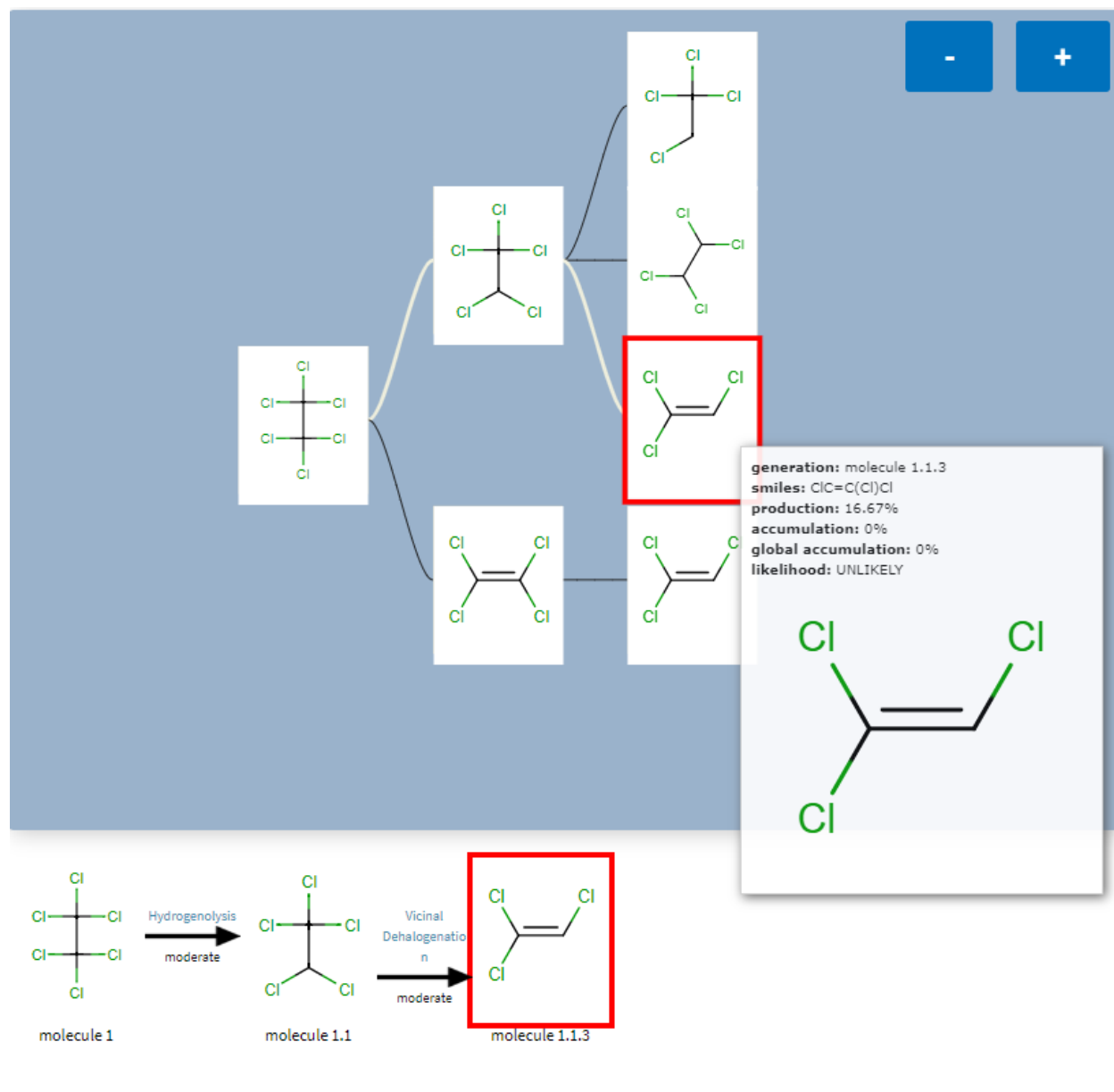
Regardless of tree type selected, all reaction pathways will initially display only the first generation of transformation products (the default value). The number of viewed generations can be increased by changing the number of generations in the “Display up to” window shown in the screen shot above. The screen shot below on the left illustrates the reaction pathway map for the formation of one generation of products of hexachloroethane based on execution of the abiotic hydrolysis and reduction libraries, as previously selected. The screen shot below on the right illustrates the reaction pathway map for the formation of two generation of products. Note that the number of observed generations cannot exceed the Generation Limit set on the previous screen.





By placing the cursor over a product, a popup box appears, with a molecule number that signifies its place in the reaction pathway map. For this example, tetrachloroethane (1.1.2) is the 2nd product formed in the second generation from the 1st product (i.e., pentachloroethane, 1.1), which was formed in the first generation from hexachloroethane as shown in the screen shot below. Below the molecule number are values for production, accumulation, global accumulation, and likelihood. The production, accumulation, and global accumulation values are explained in detail in a separate document available on the Reaction Library documentation page. Metabolites considered “likely” (having a global accumulation of at least 10%) will be highlighted with a blue border in the tree.

By left clicking on a product in the reaction pathway map, the next generation of transformation products that are predicted to form from a selected product, as well as the reactions that form them, are displayed under the reaction pathway map, as shown in the screen shot below. For each step in the transformation sequence, the name of the reaction scheme that generated the product is provided above the arrow between the parent and product. Clicking on a transformation scheme name opens a new browser tab with detailed information about the scheme from the Reaction Library documentation.



A qualitative description of the expected reaction rate for the reaction scheme is provided below the reaction arrow. This reaction rate designation is based on the median observed half-life for transformation of example molecules by the reaction scheme, as is shown in the table below. There can be considerable variability in the observed transformation rates for a given reaction scheme, so the actual transformation rate of the molecule of interest may be somewhat faster or slower than the median observed rate. For select schemes in the Abiotic Hydrolysis library, the user can select an option to replace the qualitative description with an estimated half-life value obtained from the EPI Suite™ HYDROWIN module (see section 6.6.1, page 42).

<b>Scheme Rank</b>	<b>Half-life Range</b>	<b>Rate Description</b>
7	$t_{1/2} < 30 \text{ min}$	very fast
6	$30 \text{ min} \leq t_{1/2} < 200 \text{ min}$	fast
5	$200 \text{ min} \leq t_{1/2} < 24 \text{ hours}$	moderate
4	$24 \text{ hours} \leq t_{1/2} < 7 \text{ days}$	moderate
3	$7 \text{ days} \leq t_{1/2} < 60 \text{ days}$	slow
2	$60 \text{ days} \leq t_{1/2} < 1 \text{ year}$	slow
1	$> 1 \text{ year}$	very slow

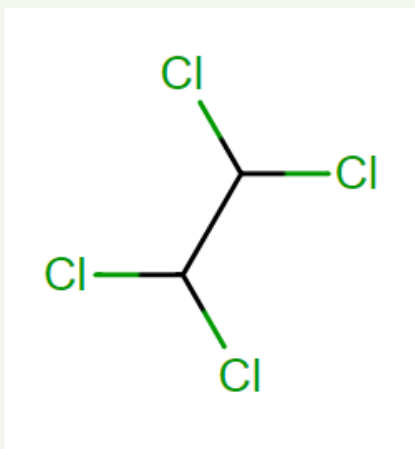
By right-clicking on a product, the molecular and metabolite information for the product is displayed above the reaction pathway map. The selected metabolite will be highlighted with a red border in the tree, as shown in the screenshot above. The “Get transformation products” button immediately below the molecular information box can be clicked to open a new browser tab with the product entered as the chemical of interest in the Generate Transformation Products workflow.

Display up to:

2nd gen ▾

Total Products:6

Unique Products:5

**- View Molecular Information**

Molecular Information	
smiles	ClC(Cl)C(Cl)Cl
routes	Hydrogenolysis
generation	molecule 1.1.2
formula	C2H2Cl4
iupac	1,1,2,2-tetrachloroethane
mass	167.84
exactMass	165.8910609

[Get transformation products](#)
**+ Calculate Physicochemical Properties**

Below the Molecular Information table, clicking on the Calculate Physicochemical Properties dropdown box provides the various options for physicochemical properties and calculators to be applied to the selected transformation product, as shown in the screen shots below. The selected physicochemical properties will be calculated and displayed in the results table. For example, selection of the All and ChemAxon, EPI Suite™, TEST and OPERA buttons and Clicking on the Calculate Physicochemical Properties link provides the screen on the results for the selected physicochemical calculators for the selected metabolite, tetrachloroethane, as shown in the screen shot below.

- Calculate Physicochemical Properties

Calculate physicochemical properties for:

Select physicochemical properties to gather for selected metabolite, then click "Calculate data" below..

	<input checked="" type="checkbox"/> ChemAxon	<input checked="" type="checkbox"/> EPI Suite	<input checked="" type="checkbox"/> TEST	<input checked="" type="checkbox"/> OPERA	Geometric Mean	<input checked="" type="checkbox"/> Measured
<input checked="" type="checkbox"/> All						
<b>Neutral Species Properties:</b>						
<input checked="" type="checkbox"/> Melting Point (°C)		-48.66	-48.80 HC -44.60 NN -27.90 GC	-39.83	-42.65	-43.80
<input checked="" type="checkbox"/> Boiling Point (°C)		149.90	140.60 HC 115.90 NN 140.50 GC	147.58	136.53	146.50
<input checked="" type="checkbox"/> Water Solubility (mg/L)	4.29e+2	1.25e+3 WSKOW 1.85e+3 WATERNT	2.73e+3 HC 2.92e+3 NN 7.42e+2 GC	2.96e+3	1.34e+3	2.83e+3
<input checked="" type="checkbox"/> Vapor Pressure (mmHg)		4.72e+0	5.06e+0 HC 6.01e+0 NN 5.13e+0 GC	7.29e+0	5.21e+0	1.33e+1
<input checked="" type="checkbox"/> Ionization Constant	none			none		
<input checked="" type="checkbox"/> Henry's Law Constant (atm·m <sup>3</sup> /mol)		1.51e-3		5.01e-4	1.51e-3	3.67e-4
<input checked="" type="checkbox"/> Octanol/Water Partition Coefficient (log)	3.54 KLOP 2.06 VG 2.91 PHYS	2.19		2.35	2.68	2.39
<input checked="" type="checkbox"/> Organic Carbon Partition Coefficient (log(L/kg))		1.98 MCI 2.07 KOW		1.89	2.03	
<input checked="" type="checkbox"/> Bioconcentration Factor (log(L/kg))		1.24 REG 1.29 A-G	1.36 SM 1.04 HC 1.09 NN 1.27 GC	1.07	1.22	
<input checked="" type="checkbox"/> Bioaccumulation Factor (log(L/kg))		1.29 A-G			1.29	
<b>pH-Dependent Properties at</b>						
pH: <input type="text" value="7.4"/>						
<input checked="" type="checkbox"/> Octanol/Water Distribution Coefficient (log)	3.54 KLOP 2.06 VG 2.91 PHYS			2.35	2.84	
<input checked="" type="checkbox"/> Water Solubility (mg/L)	4.29e+2				4.29e+2	
	Available	Unavailable				

To get physicochemical data for multiple metabolites, select the option for calculating physicochemical properties for up to the first, second, or third generation of metabolites, or for all calculated metabolites from the drop-down menu. Then, select the properties and calculators to be used and click the Calculate data button. The results for multiple metabolites will not be presented in the table as they are for a single metabolite. To view the results for multiple metabolites, download and view the report (as a PDF, CSV, or HTML file) as described below.

## 6.7. Generation of PDF, HTML and CSV Reports

The .pdf, .html and .csv buttons appear on the top right corner of the results page, regardless of the workflow. Clicking on the .pdf button generates a PDF file that can be viewed in the web browser or using free PDF software. The HTML file can be viewed using a web browser.

The PDF and HTML reports are multi-page reports showing the calculated physicochemical data for the parent compound and the selected transformation products. Examples of the PDF and HTML reports are shown below in the first two screen shots.

The screenshot displays a report with the following sections:

- Metabolite Information:** A table with columns for Metabolite Name, Transformation Pathway, SMILES, Molecular Weight, CAS, IUPAC Name, and Molecular Formula.
- Chemical Structure:** A ball-and-stick model of a cyclohexane ring with six chlorine atoms attached to each carbon atom.
- Physicochemical Properties:** A table with columns for Property Name, Value, and Units.
- Summary Table:** A table with columns for Metabolite Name, SMILES, Molecular Weight, CAS, IUPAC Name, and Molecular Formula.

PDF Report

smiles	OC(Cl)(Cl)C(Cl)C(Cl)C(Cl)C(Cl)
exactMass	233.811032
iupac	pentachlorocyclopent-1-ol
genKey	1.1
mass	233.8
route	Halogenated Aliphatics: Hydrophobic Substitution (general Cl)
formula	C5HCl5O

ChemName	SPY	Scale	EST	IPWAC	Assessed
HEXACHLOROCYCLOPENTADIENE	233.8	233.8	233.8	233.8	233.8
HEXACHLOROCYCLOPENTADIENE	233.8	233.8	233.8	233.8	233.8
HEXACHLOROCYCLOPENTADIENE	233.8	233.8	233.8	233.8	233.8
HEXACHLOROCYCLOPENTADIENE	233.8	233.8	233.8	233.8	233.8
HEXACHLOROCYCLOPENTADIENE	233.8	233.8	233.8	233.8	233.8
HEXACHLOROCYCLOPENTADIENE	233.8	233.8	233.8	233.8	233.8
HEXACHLOROCYCLOPENTADIENE	233.8	233.8	233.8	233.8	233.8
HEXACHLOROCYCLOPENTADIENE	233.8	233.8	233.8	233.8	233.8
HEXACHLOROCYCLOPENTADIENE	233.8	233.8	233.8	233.8	233.8
HEXACHLOROCYCLOPENTADIENE	233.8	233.8	233.8	233.8	233.8
HEXACHLOROCYCLOPENTADIENE	233.8	233.8	233.8	233.8	233.8

HTML Report

The CSV report is generated in a tabular format as shown below in the screen shot.

	A	B	C	D	E	F	G	
1	genKey	routes	smiles	iupac	formula	mass	exactMass	
2		1	ClC(Cl)(Cl)C(Cl)C(Cl)C(Cl)C(Cl)	hexachlor	C2Cl6	236.72	233.8131	
3		1.1	Halogenat	OC(Cl)(Cl)C(Cl)C(Cl)C(Cl)C(Cl)	C2HCl5O	218.28	215.847	
4		1.2	Hydrogen	ClC(Cl)C(Cl)C(Cl)C(Cl)C(Cl)C(Cl)	C2HCl5	202.28	199.8521	
5	1.2.1		Hydrogen	ClC=C(Cl)C(Cl)C(Cl)C(Cl)C(Cl)	1,1,2-trich	C2HCl3	131.38	129.9144
6	1.2.2		Hydrogen	ClC(Cl)=C(Cl)C(Cl)C(Cl)C(Cl)C(Cl)	tetrachlor	C2Cl4	165.82	163.8754
7	1.2.3		Hydrogen	OC(Cl)(Cl)C(Cl)C(Cl)C(Cl)C(Cl)C(Cl)	1,1,2,2-tet	C2H2Cl4O	183.84	181.886
8	1.2.4		Hydrogen	OC(Cl)C(Cl)C(Cl)C(Cl)C(Cl)C(Cl)C(Cl)	1,2,2,2-tet	C2H2Cl4O	183.84	181.886
9	1.2.5		Hydrogen	ClCC(Cl)(Cl)C(Cl)C(Cl)C(Cl)C(Cl)	1,1,1,2-tet	C2H2Cl4	167.84	165.8911
10	1.2.6		Hydrogen	ClC(Cl)C(Cl)C(Cl)C(Cl)C(Cl)C(Cl)	1,1,1,2-tet	C2H2Cl4	167.84	165.8911
11		1.3	Vicinal De	ClC(Cl)=C(Cl)C(Cl)C(Cl)C(Cl)C(Cl)	tetrachlor	C2Cl4	165.82	163.8754
12	1.3.1		Vicinal De	ClC=C(Cl)C(Cl)C(Cl)C(Cl)C(Cl)C(Cl)	1,1,2-trich	C2HCl3	131.38	129.9144

CSV Report

## 7. References

- Drossman, H.; Johnson, H.; Mill, T. 1988. Structure activity relationships for environmental processes 1: Hydrolysis of esters and carbamates. *Chemosphere* 17(8): 1509-1530.
- Hou, T.J., Xia, K., Zhang, W., Xu, X.J. 2004. ADME evaluation in drug discovery. 4. prediction of aqueous solubility based on atom contribution approach, *J. Chem. Inf. Comput. Sci.* 44: 266-275.
- Klopman, G., Li, J.-Y., Wang, S., Dimayuga., M. 1994. Computer automated log P calculations based on an extended group contribution approach. *J. Chem. Inf. Comput. Sci.* 34: 752-781.
- Mansouri, K., Grulke, C.M., Judson, R.S., Williams, A.J. 2018. OPERA models for predicting physicochemical properties and environmental fate endpoints. *J. Cheminform.* 10:10.
- Martin, T.M., Harten, P., Venkatapathy, R., Das, S. Young, D.M. 2008. A hierarchical clustering methodology for the estimation of toxicity, toxicology mechanisms and methods. *Toxicol. Mech. Methods* 18: 251–266.
- Martin, T.M., Young, D.M. 2001. Prediction of the acute toxicity (96-h LC50) of organic compounds in the fathead minnow (*Pimephales Promelas*) using a group contribution method. *Chem. Res. Toxicol.* 14: 1378–1385.
- Meylan, W., P.H. Howard and R.S. Boethling. 1992. Molecular topology/fragment contribution method for predicting soil sorption coefficients. *Environ. Sci. Technol.* 26: 1560-1567.
- Meylan W.M., Howard, P.H. 1995. Atom/Fragment contribution method for estimating octanol-water partition coefficients, *J. Pharm. Sci.*, 84: 83-92.
- Meylan, W.M., Howard, P.H., Boethling, R.S. 1996. Improved method for estimating water solubility from octanol/water partition coefficient. *Environ. Toxicol. Chem.* 15: 100-106.
- Szegezdi, J., Csizmadia, F. 2004. Prediction of dissociation constant using microconstants. 27th ACS National Meeting, Anaheim, California, March 28-April 1, 2004.
- Szegezdi, J., Csizmadia, F. 2007. A method for calculating the pKa values of small and large molecules. American Chemical Society Spring meeting, March 25-29th, 2007.
- US EPA. 2012. Estimation Programs Interface Suite™ for Microsoft® Windows, v 4.11. United States Environmental Protection Agency, Washington, DC, USA.
- U.S. EPA 2020. User's Guide for T.E.S.T. (version 5.1) (Toxicity Estimation Software Tool): A Program to Estimate Toxicity from Molecular Structure, EPA/600/R-16/058. United States Environmental Protection Agency, Washington, DC, USA.
- Viswanadhan, V.N., Ghose, A.K., Revankar, G.R., Robins, R.K. 1989. Atomic physicochemical parameters for three-dimensional structure directed quantitative structure-activity relationships. 4. Additional parameters for hydrophobic and dispersive interactions and their application for an automated superposition of certain naturally occurring nucleoside antibiotics. *J. Chem. Inf. Comput. Sci.* 29: 163-172.